



Zip Code Health Rankings



Table of Contents

- Introduction..... 1**
 - Letter to the HCF Board..... 1
 - Health Rankings Framework 2
- Summary Figures: HCF Service Area 3**
 - Figure 1. HCF Service Area 3
 - Figure 2. Overall Zip Code Health Rankings 4
 - Figure 3. Changes in Median Household Income..... 5
 - Figure 4. Changes in Predominant Racial/Ethnic Group..... 6
- Summary Tables: HCF Service Area 7**
 - Table 1. Summary of Demographic Changes 7
 - Table 2. Zip Code Health Rankings Overall and by Category 8
 - Table 3. Top and Bottom Zip Code Health Rankings Performers by Category 9
- HCF Zip Code Health Rankings 11**
 - 1. Zip Code 60558 (Western Springs)..... 11
 - 2. Zip Code 60304 (Oak Park) 13
 - 3. Zip Code 60305 (River Forest) 15
 - 4. Zip Code 60526 (LaGrange Park)..... 17
 - 5. Zip Code 60513 (Brookfield) 19
 - 6. Zip Code 60525 (LaGrange, Countryside, Hodgkins, Indian Head Park, McCook) 21
 - 7. Zip Code 60301 (Oak Park) 23
 - 8. Zip Code 60546 (Riverside, North Riverside) 25
 - 9. Zip Code 60302 (Oak Park) 27
 - 10. Zip Code 60154 (Westchester) 29
 - 11. Zip Code 60638 (Bedford Park, Clearing, Forest View, Stickney)..... 31
 - 12. Zip Code 60534 (Lyons) 33
 - 13. Zip Code 60457 (Hickory Hills) 35
 - 14. Zip Code 60804 (Cicero) 37

15. Zip Code 60402 (Berwyn, Forest View, Stickney).....	39
16. Zip Code 60459 (Burbank).....	41
17. Zip Code 60501 (Summit, Argo)	43
18. Zip Code 60455 (Bridgeview)	45
19. Zip Code 60130 (Forest Park)	47
20. Zip Code 60652 (Chicago – Ashburn Park)	49
21. Zip Code 60458 (Justice).....	51
22. Zip Code 60632 (Chicago – Elsdon)	53
23. Zip Code 60629 (Chicago – Chicago Lawn).....	55
24. Zip Code 60155 (Broadview)	57
25. Zip Code 60153 (Maywood)	59
26. Zip Code 60623 (Chicago – Lawndale)	61
27. Zip Code 60644 (Chicago – Austin).....	63
Appendix	65
Zip Code Health Ranking Methodology.....	66
Tables: HCF Service Area Demographics.....	70

To the Board of Healthy Communities Foundation,

We are excited to share the *Healthy Communities Foundation (HCF) Zip Code Health Rankings* with you. These 27 community snapshots illuminate how our health is influenced by where we live, learn, work, and play. They provide a starting point for improving health, neighborhood by neighborhood, in HCF's service area. By focusing on specific determinants of health, the *HCF Zip Code Health Rankings* inform efforts to mobilize community action to improve health and well-being both within and across HCF communities.

HCF's mission is to "measurably improve the health and well-being of individuals, families and communities in our service area by promoting health equity, quality, and access for all." Improving health for everyone involves placing well-being at the center of every aspect of life, including our communities. Only by investing in health from the holistic community perspective can we expect to improve the health status and quality of life of community residents.

The *HCF Zip Code Health Rankings* provide a framework for understanding the complex factors that shape health. Easy-to-use zip code reports highlight which social, behavioral, clinical, and environmental aspects to target to improve health in a particular HCF community. The ranking feature enables comparisons across communities as well as a regional benchmark, providing a data tool for quantifying and communicating the relative health status of community residents. Thus, the *HCF Zip Code Health Rankings* are meant to provide the Board with community health snapshots as well as the ability to quickly discern high priority zip codes with a more pressing need for support.

Equipped with a greater understanding of community health status, HCF can increase opportunities and promote health equity, neighborhood by neighborhood.

Across HCF's service area, we see significant differences in health from one community to the next. Some residents have consistently better access to opportunities and resources over the course of their lives. Equipped with a greater understanding of community health status, HCF can increase opportunities and promote health equity, neighborhood by neighborhood.

The *HCF Zip Code Health Rankings* provide a starting point and frame of reference for HCF Board members to focus grantmaking on measurable improvements in health and well-being in HCF communities. In keeping with the HCF mission, the ultimate goal is that every resident in the HCF service area, regardless of neighborhood or background, has the resources and opportunities needed to live a healthy life.

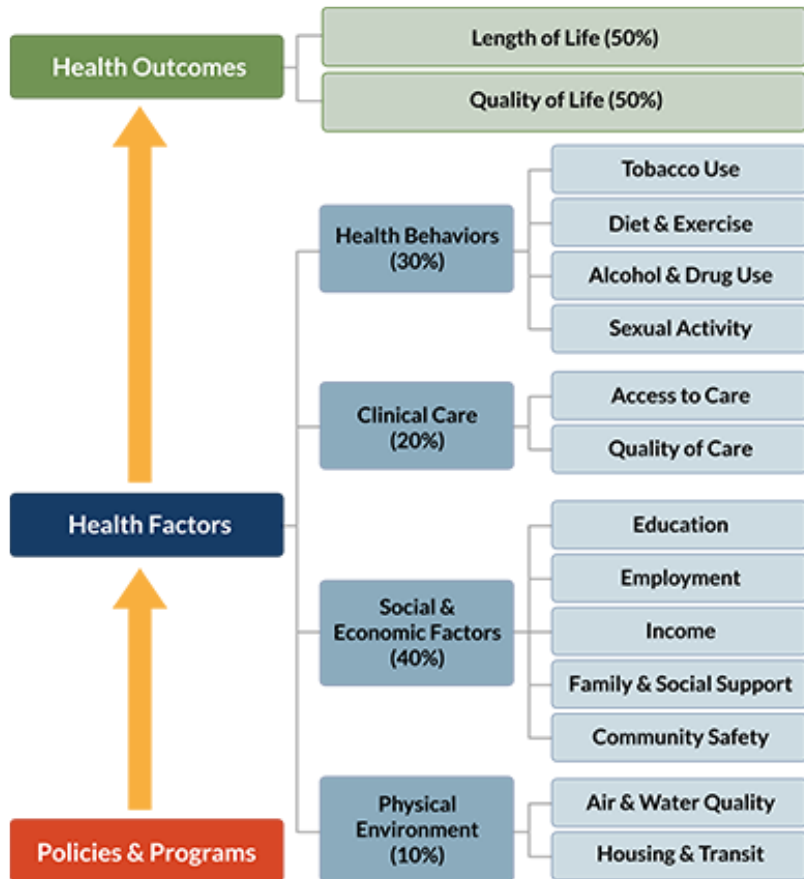


Jana Hirschtick, PhD, Senior Epidemiologist, and Sharon Homan, PhD, President
Sinai Urban Health Institute
Health equity through innovation, data-driven research, and collaboration

Health Rankings Framework

The *HCF Zip Code Health Rankings* are based on the County Health Rankings & Roadmaps, a national model for understanding the factors that influence longevity and quality of life among populations, created by the University of Wisconsin Population Health Institute and the Robert Wood Johnson Foundation.

The County Health Rankings & Roadmaps model posits that health is more than health care. Our length and quality of life are a function of our total life experience, including the environment around us, the education we receive, the resulting lifestyle choices we make, and our access to quality health care. For example, improving health care quality will not result in corresponding improvements in community health if residents are not able to access needed care because they are uninsured, lack reliable and affordable transportation, or do not have paid time off of work. We need this broader picture to understand where and how to intervene to make a difference in health outcomes at the population level.

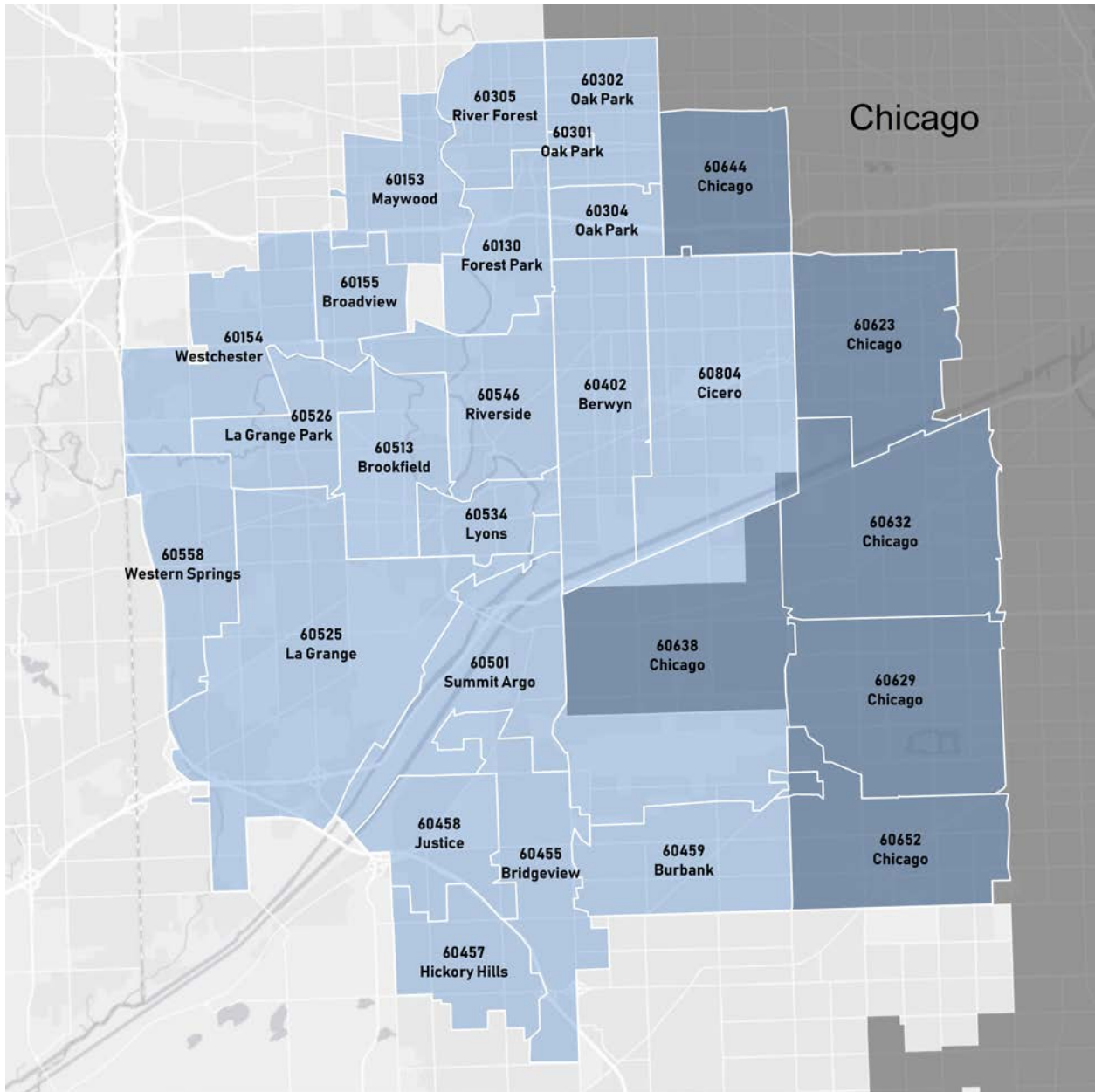


University of Wisconsin Population Health Institute. County Health Rankings & Roadmaps 2017. www.countyhealthrankings.org

About Sinai Urban Health Institute

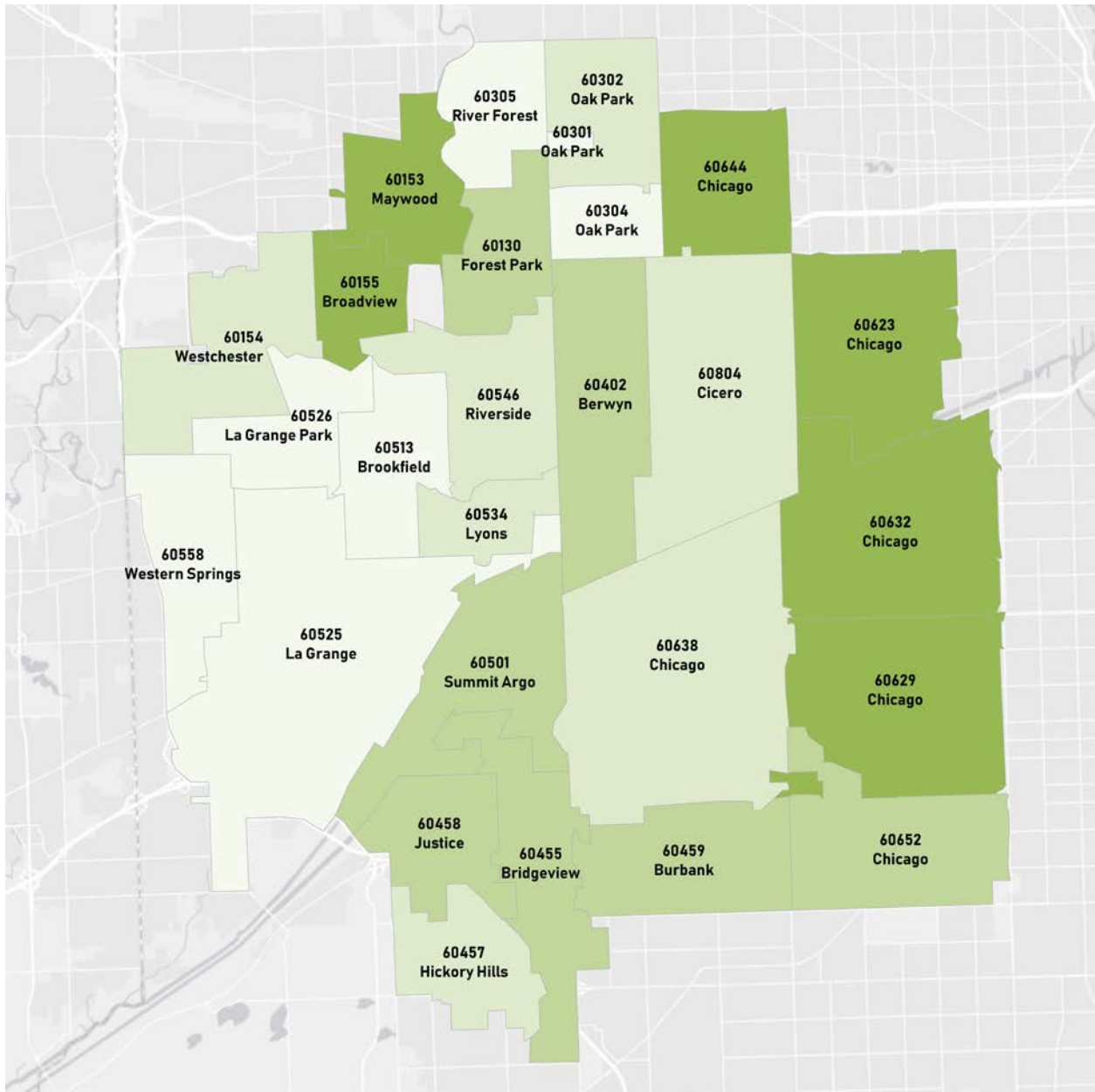
Sinai Urban Health Institute is the unique, nationally-recognized community research arm of Sinai Health System, a safety-net hospital on Chicago’s west side. Our diverse team advances urban health by identifying health inequities; addressing these inequities with innovative solutions; and rigorously evaluating our work to ensure effectiveness. These strategies further our vision for *all communities to thrive in health*. Consistent community engagement is the common thread running across each strategy, aligning our work with our vision.

Figure 1. Healthy Communities Foundation Service Area¹



1. Shaded region represents city of Chicago boundary

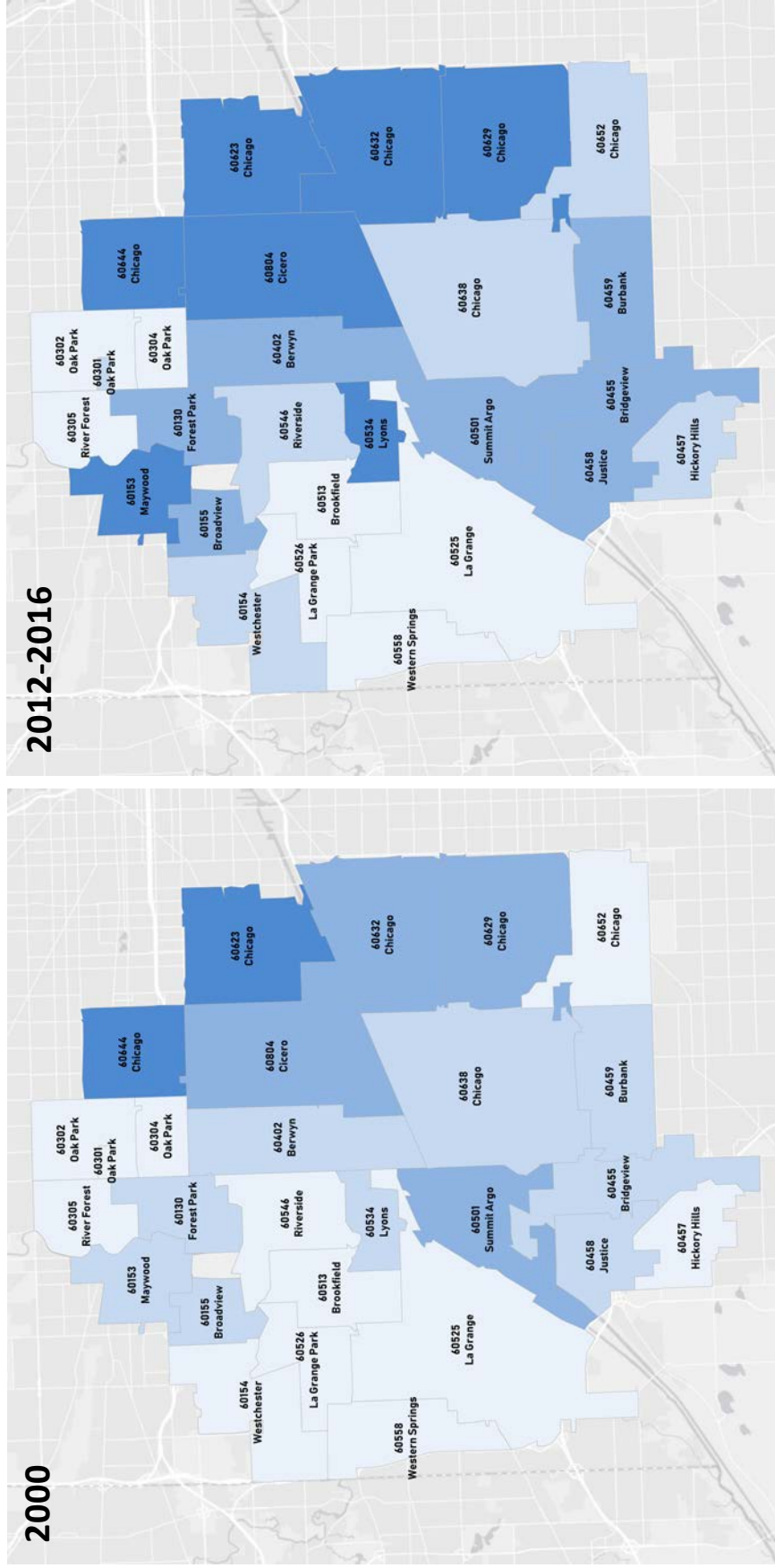
Figure 2. Overall Zip Code Health Rankings: Healthy Communities Foundation Service Area



Health Rankings

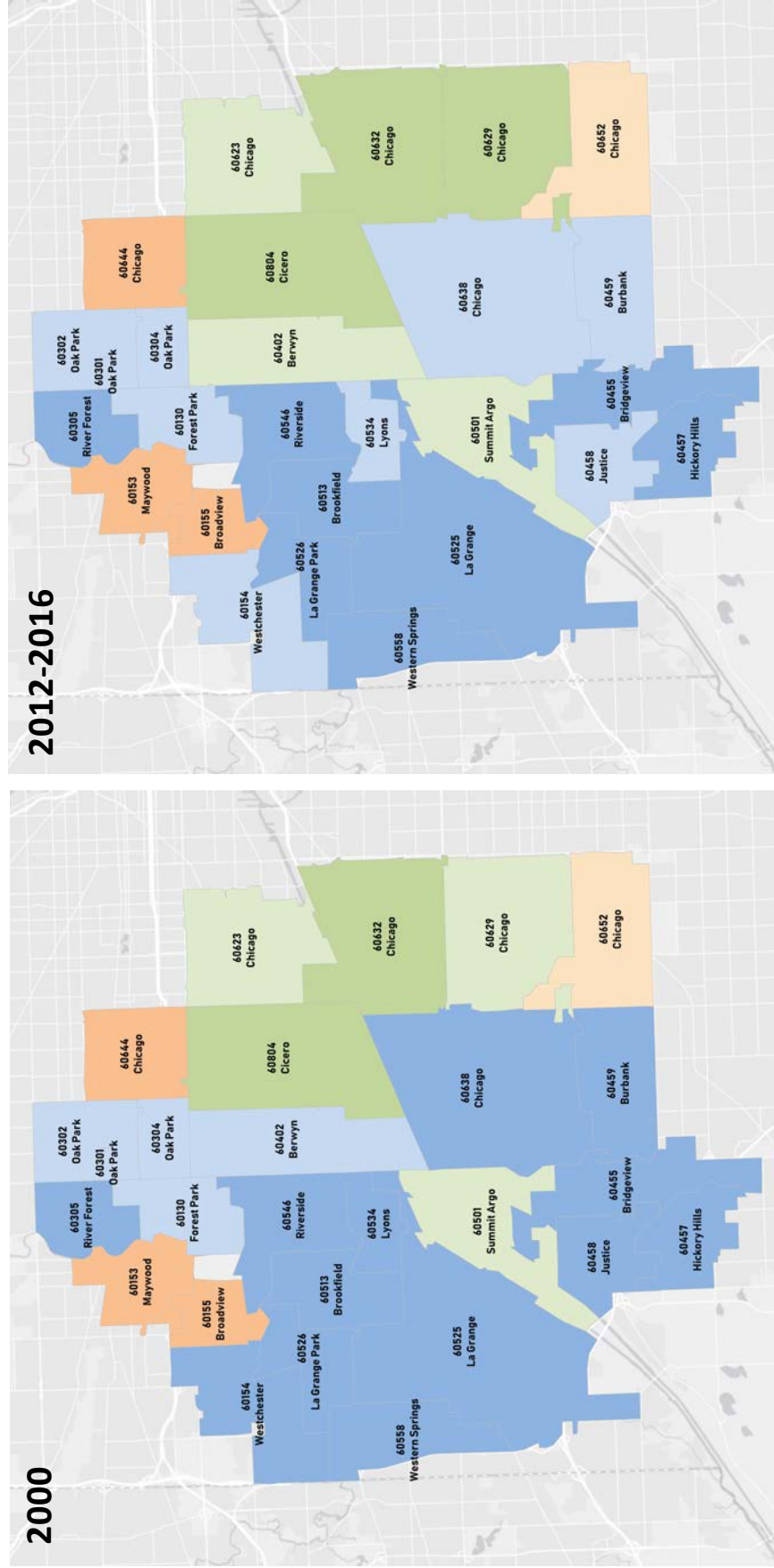
- 1-7
- 8-14
- 15-21
- 22-27

Figure 3. Changes in Median Household Income (2016 Inflation-Adjusted Dollars): Healthy Communities Foundation Service Area, 2000 (U.S. Census) to 2012-2016 (American Community Survey)



Median Household Income (Quartiles)
 ■ <\$46,000 ■ \$46,000-59,999 ■ \$60,000-74,999 ■ \$75,000+

Figure 4. Changes in Predominant Racial/Ethnic Group: Healthy Communities Foundation Service Area, 2000 (U.S. Census) to 2012-2016 (American Community Survey)



Predominant Racial/Ethnic Group

- Non-Hispanic White (<70%)
- Non-Hispanic White (>70%)
- Non-Hispanic Black (<70%)
- Non-Hispanic Black (>70%)
- Hispanic (<70%)
- Hispanic (>70%)

Table 1. Summary of Demographic Changes Over Time: Healthy Communities Foundation Service Area, 2000 (U.S. Census) to 2012-2016 (American Community Survey)

	60130	60153	60154	60155	60301	60302	60304	60305	60402	60455	60457	60458	60459	60501	60513	60525	60526	60534	60546	60558	60623	60629	60632	60638	60644	60652	60804	
Total population	Blue	Blue	Blue	Blue	Blue	Blue	Blue	Blue	Blue	Blue	Blue	Blue	Blue	Blue	Blue	Blue	Blue	Blue	Blue	Blue	Blue	Blue	Blue	Blue	Blue	Blue	Blue	
Race and Ethnicity																												
Hispanic or Latino	Orange	Orange	Orange	Orange	Orange	Orange	Orange	Orange	Orange	Orange	Orange	Orange	Orange	Orange	Orange	Orange	Orange	Orange	Orange	Orange	Orange	Orange	Orange	Orange	Orange	Orange	Orange	Orange
Non-Hispanic White	Blue	Blue	Blue	Blue	Blue	Blue	Blue	Blue	Blue	Blue	Blue	Blue	Blue	Blue	Blue	Blue	Blue	Blue	Blue	Blue	Blue	Blue	Blue	Blue	Blue	Blue	Blue	
Non-Hispanic Black	Blue	Blue	Blue	Blue	Blue	Blue	Blue	Blue	Blue	Blue	Blue	Blue	Blue	Blue	Blue	Blue	Blue	Blue	Blue	Blue	Blue	Blue	Blue	Blue	Blue	Blue	Blue	
Foreign born population	Blue	Blue	Blue	Blue	Blue	Blue	Blue	Blue	Blue	Blue	Blue	Blue	Blue	Blue	Blue	Blue	Blue	Blue	Blue	Blue	Blue	Blue	Blue	Blue	Blue	Blue	Blue	
Socioeconomic Characteristics																												
High school graduates	Orange	Orange	Orange	Orange	Orange	Orange	Orange	Orange	Orange	Orange	Orange	Orange	Orange	Orange	Orange	Orange	Orange	Orange	Orange	Orange	Orange	Orange	Orange	Orange	Orange	Orange	Orange	Orange
Median income	Blue	Blue	Blue	Blue	Blue	Blue	Blue	Blue	Blue	Blue	Blue	Blue	Blue	Blue	Blue	Blue	Blue	Blue	Blue	Blue	Blue	Blue	Blue	Blue	Blue	Blue	Blue	
Unemployment rate	Orange	Orange	Orange	Orange	Orange	Orange	Orange	Orange	Orange	Orange	Orange	Orange	Orange	Orange	Orange	Orange	Orange	Orange	Orange	Orange	Orange	Orange	Orange	Orange	Orange	Orange	Orange	Orange
Owner occupied housing	Blue	Blue	Blue	Blue	Blue	Blue	Blue	Blue	Blue	Blue	Blue	Blue	Blue	Blue	Blue	Blue	Blue	Blue	Blue	Blue	Blue	Blue	Blue	Blue	Blue	Blue	Blue	
Age and Language Spoken at Home																												
Median age	Orange	Orange	Orange	Orange	Orange	Orange	Orange	Orange	Orange	Orange	Orange	Orange	Orange	Orange	Orange	Orange	Orange	Orange	Orange	Orange	Orange	Orange	Orange	Orange	Orange	Orange	Orange	Orange
Speaks only English	Blue	Blue	Blue	Blue	Blue	Blue	Blue	Blue	Blue	Blue	Blue	Blue	Blue	Blue	Blue	Blue	Blue	Blue	Blue	Blue	Blue	Blue	Blue	Blue	Blue	Blue	Blue	
Speaks Spanish	Blue	Blue	Blue	Blue	Blue	Blue	Blue	Blue	Blue	Blue	Blue	Blue	Blue	Blue	Blue	Blue	Blue	Blue	Blue	Blue	Blue	Blue	Blue	Blue	Blue	Blue	Blue	
Speaks other Indo-European languages	Blue	Blue	Blue	Blue	Blue	Blue	Blue	Blue	Blue	Blue	Blue	Blue	Blue	Blue	Blue	Blue	Blue	Blue	Blue	Blue	Blue	Blue	Blue	Blue	Blue	Blue	Blue	
Speaks Asian and Pacific Island language	Blue	Blue	Blue	Blue	Blue	Blue	Blue	Blue	Blue	Blue	Blue	Blue	Blue	Blue	Blue	Blue	Blue	Blue	Blue	Blue	Blue	Blue	Blue	Blue	Blue	Blue	Blue	
Speaks other languages	Orange	Orange	Orange	Orange	Orange	Orange	Orange	Orange	Orange	Orange	Orange	Orange	Orange	Orange	Orange	Orange	Orange	Orange	Orange	Orange	Orange	Orange	Orange	Orange	Orange	Orange	Orange	Orange

Increase
 Decrease
 No Change

Changes in indicators were measured by assessing whether the data point from the 2000 U.S. Census fell within the margin of error from the 2012-2016 American Community Survey. If the data point from 2000 was smaller than the lower bound of the 2012-2016 margin of error, we recorded an increase. Conversely, if the data point from 2000 was larger than the upper bound of the 2012-2016 estimate, we recorded a decrease.

Table 2. Zip Code Health Rankings Overall and by Category: Healthy Communities Foundation Service Area

Zip Code	Overall Rank	Health Outcomes	Health Behaviors	Clinical Care	Social & Economic Factors	Physical Environment	City
60558	1	1	1	1	1	1	Western Springs
60304	2	3	10	12	2	17	Oak Park
60305	3	15	3	2	3	15	River Forest
60526	4	11	18	8	4	2	LaGrange Park
60513	5	7	9	9	6	11	Brookfield
60525	6	14	7	6	7	3	LaGrange
60301	7	10	5	4	11	18	Oak Park
60546	8	19	4	5	9	7	Riverside
60302	9	12	12	10	8	12	Oak Park
60154	10	23	2	3	5	6	Westchester
60638	11	6	11	16	12	19	Bedford Park
60534	12	9	15	19	13	10	Lyons
60457	13	17	13	7	16	4	Hickory Hills
60804	14	2	17	24	22	21	Cicero
60402	15	8	16	20	15	20	Berwyn
60459	16	16	19	13	14	13	Burbank
60501	17	4	8	23	20	16	Summit
60455	18	13	20	14	19	5	Bridgeview
60130	19	20	21	17	10	14	Forest Park
60652	20	22	6	18	17	23	Chicago - Ashburn Park
60458	21	18	25	21	18	8	Justice
60632	22	5	24	26	24	24	Chicago - Elsdon
60629	23	21	22	25	25	25	Chicago - Chicago Lawn
60155	24	25	14	11	21	9	Broadview
60153	25	26	23	15	23	22	Maywood
60623	26	24	27	27	26	26	Chicago - Lawndale
60644	27	27	26	22	27	27	Chicago - Austin

Table 3. Top & Bottom Zip Code Health Rankings Performers by Category: Healthy Communities Foundation Service Area

	Bottom Performer ¹		Top Performer ¹	
Overall Rank	60644	Chicago – Austin	60558	Western Springs
Health Outcomes	60644	Chicago – Austin	60558	Western Springs
Chronic Conditions	60644	Chicago – Austin	60804	Cicero
Adults with asthma	60644	Chicago – Austin	60804	Cicero
Adults with COPD ²	60644	Chicago – Austin	60804	Cicero
Adults with diabetes	60153	Maywood	60458	Justice
Adults who have had a stroke	60644	Chicago – Austin	60804	Cicero
Adults with high blood pressure	60644	Chicago – Austin	60804	Cicero
Quality of Life	60644	Chicago – Austin	60558	Western Springs
Adults with fair or poor overall health status	60644	Chicago – Austin	60558	Western Springs
Adults with frequent poor physical health days	60644	Chicago – Austin	60558	Western Springs
Adults with frequent poor mental health days	60644	Chicago – Austin	60558	Western Springs
Low birthweight or premature births	60155	Broadview	60558	Western Springs
Health Factors	60623	Chicago – Lawndale	60558	Western Springs
Health Behaviors	60623	Chicago – Lawndale	60558	Western Springs
Adult obesity	60644	Chicago – Austin	60558	Western Springs
Adults who currently smoke	60458	Justice	60558	Western Springs
Adults who are not physically active	60623	Chicago – Lawndale	60558	Western Springs
Adults eating <1 fruit/vegetable serving per day	60644	Chicago – Austin	60558	Western Springs
Adults reporting heavy drinking	60558	Western Springs	60153	Maywood
Adults reporting binge drinking	60458	Justice	60153	Maywood
Population living in food desert	60534	Lyons	Multiple ⁵	Multiple
Teen births per 1,000 population	60153	Maywood	Multiple ⁶	Multiple

Table 3. Top & Bottom Zip Code Health Rankings Performers by Category: Healthy Communities Foundation Service Area (continued)

	Bottom Performer ¹		Top Performer ¹	
Clinical Care	60623	Chicago – Lawndale	60558	Western Springs
Population without health insurance	60623	Chicago – Lawndale	60558	Western Springs
Adults with primary care doctor	60632	Chicago – Elsdon	60558	Western Springs
Adults with routine checkup in past year	60632	Chicago – Elsdon	60155	Broadview
Preventable ED visits	60644	Chicago – Austin	60305	River Forest
Social & Economic Factors	60644	Chicago – Austin	60558	Western Springs
Adults with high school diploma	60623	Chicago – Lawndale	60558	Western Springs
Adults with bachelor’s degree	60804	Cicero	60558	Western Springs
Unemployment rate	60644	Chicago – Austin	60558	Western Springs
Median household income	60644	Chicago – Austin	60558	Western Springs
Income inequality ³	60305	River Forest	60652	Chicago – Ashburn
Children in poverty	60623	Chicago – Lawndale	60526	LaGrange Park
Single-parent households	60644	Chicago – Austin	60558	Western Springs
Population without U.S. citizenship	60632	Chicago – Elsdon	60558	Western Springs
Physical Environment	60644	Chicago – Austin	60558	Western Springs
High risk for pediatric blood lead poisoning	Multiple ⁷	Multiple	Multiple ⁸	Multiple
Average daily particulate matter ⁴ (µg/m ³)	60130	Forest Park	60457	Hickory Hills
Vacant housing units	60301	Oak Park	60534	Lyons
Substandard housing units	60623	Chicago – Lawndale	60558	Western Springs
Commute to work over 1 hour	60644	Chicago – Austin	60305	River Forest

1. Bottom and top performers were selected based on measurements estimated to one decimal point; however, for readability, indicators within this report are rounded to the whole number.

2. Chronic Obstructive Pulmonary Disease

3. Gini Index: value of zero indicates perfect equality of income and value of one indicates perfect inequality

4. Not to exceed 35 µg/m³ per the Environmental Protection Agency daily standard

5. 60130, 60153, 60155, 60301, 60302, 60304, 60305, 60402, 60501, 60546, 60623, 60629, 60632

6. 60130, 60154, 60155, 60301, 60304, 60305, 60455, 60457, 60458, 60501, 60513, 60525, 60526, 60534, 60546, 60558, 60652

7. 60153, 60301, 60302, 60304, 60305, 60402, 60501, 60513, 60534, 60546, 60623, 60629, 60632, 60638, 60644, 60652, 60804

8. 60130, 60154, 60155, 60455, 60457, 60458, 60459, 60525, 60526, 60558

1. Zip Code 60558 (Western Springs)

	Zip Code 60558	Top Performer	Cook County	Rank (of 27)
Overall Rank				1
Health Outcomes				1
Chronic Conditions				6
Adults with asthma	7%	6%	8%	
Adults with COPD ¹	6%	4%	6%	
Adults with diabetes	10%	10%	12%	
Adults who have had a stroke	3%	2%	3%	
Adults with high blood pressure	35%	26%	34%	
Quality of Life				1
Adults with fair or poor overall health status	13%	13%	18%	
Adults with frequent poor physical health days	19%	19%	22%	
Adults with frequent poor mental health days	16%	16%	20%	
Low birthweight or premature births	5%	5%	9%	
Health Factors				1
Health Behaviors				1
Adult obesity	28%	28%	31%	
Adults who currently smoke	13%	13%	18%	
Adults who are not physically active	26%	26%	31%	
Adults eating <1 fruit/vegetable serving per day	6%	6%	8%	
Adults reporting heavy drinking	7%	4%	6%	
Adults reporting binge drinking	19%	14%	19%	
Population living in food desert	5%	0%	8%	
Teen births per 1,000 population	0.0	0.0	16.3	

Clinical Care				1
Population without health insurance	1%	1%	13%	
Adults with primary care doctor	89%	89%	81%	
Adults with routine checkup in past year	73%	75%	69%	
Preventable ED visits	4%	3%	6%	
Social & Economic Factors				1
Adults with high school diploma	99%	99%	86%	
Adults with bachelor's degree	77%	77%	37%	
Unemployment rate	3%	3%	10%	
Median household income	\$147,361	\$147,361	\$56,902	
Income inequality ²	.45	.38	.50	
Children in poverty	2%	2%	24%	
Single-parent households	4%	4%	10%	
Population without U.S. citizenship	0%	0%	11%	
Physical Environment				1
High risk for pediatric blood lead poisoning	No	No	N/A	
Average daily particulate matter ³ ($\mu\text{g}/\text{m}^3$)	7.8	5.8	11.9	
Vacant housing units	4%	4%	10%	
Substandard housing units	19%	19%	41%	
Commute to work over 1 hour	13%	8%	14%	

1. Chronic Obstructive Pulmonary Disease

2. Gini Index: value of zero indicates perfect equality of income and value of one indicates perfect inequality

3. Not to exceed $35 \mu\text{g}/\text{m}^3$ per the Environmental Protection Agency daily standard

2. Zip Code 60304 (Oak Park)

	Zip Code 60304	Top Performer	Cook County	Rank (of 27)
Overall Rank				2
Health Outcomes				3
Chronic Conditions				5
Adults with asthma	8%	6%	8%	
Adults with COPD ¹	5%	4%	6%	
Adults with diabetes	10%	10%	12%	
Adults who have had a stroke	2%	2%	3%	
Adults with high blood pressure	32%	26%	34%	
Quality of Life				6
Adults with fair or poor overall health status	14%	13%	18%	
Adults with frequent poor physical health days	19%	19%	22%	
Adults with frequent poor mental health days	19%	16%	20%	
Low birthweight or premature births	8%	5%	9%	
Health Factors				6
Health Behaviors				10
Adult obesity	30%	28%	31%	
Adults who currently smoke	17%	13%	18%	
Adults who are not physically active	27%	26%	31%	
Adults eating <1 fruit/vegetable serving per day	7%	6%	8%	
Adults reporting heavy drinking	6%	4%	6%	
Adults reporting binge drinking	20%	14%	19%	
Population living in food desert	0%	0%	8%	
Teen births per 1,000 population	0.0	0.0	16.3	

Clinical Care				12
Population without health insurance	6%	1%	13%	
Adults with primary care doctor	84%	89%	81%	
Adults with routine checkup in past year	69%	75%	69%	
Preventable ED visits	5%	3%	6%	
Social & Economic Factors				2
Adults with high school diploma	98%	99%	86%	
Adults with bachelor's degree	70%	77%	37%	
Unemployment rate	5%	3%	10%	
Median household income	\$93,903	\$147,361	\$56,902	
Income inequality ²	.42	.38	.50	
Children in poverty	2%	2%	24%	
Single-parent households	9%	4%	10%	
Population without U.S. citizenship	4%	0%	11%	
Physical Environment				17
High risk for pediatric blood lead poisoning	Yes	No	N/A	
Average daily particulate matter ³ ($\mu\text{g}/\text{m}^3$)	12.0	5.8	11.9	
Vacant housing units	7%	4%	10%	
Substandard housing units	32%	19%	41%	
Commute to work over 1 hour	12%	8%	14%	

1. Chronic Obstructive Pulmonary Disease

2. Gini Index: value of zero indicates perfect equality of income and value of one indicates perfect inequality

3. Not to exceed $35 \mu\text{g}/\text{m}^3$ per the Environmental Protection Agency daily standard

3. Zip Code 60305 (River Forest)

	Zip Code 60305	Top Performer	Cook County	Rank (of 27)
Overall Rank				3
Health Outcomes				15
Chronic Conditions				21
Adults with asthma	7%	6%	8%	
Adults with COPD ¹	6%	4%	6%	
Adults with diabetes	12%	10%	12%	
Adults who have had a stroke	3%	2%	3%	
Adults with high blood pressure	37%	26%	34%	
Quality of Life				5
Adults with fair or poor overall health status	15%	13%	18%	
Adults with frequent poor physical health days	21%	19%	22%	
Adults with frequent poor mental health days	17%	16%	20%	
Low birthweight or premature births	8%	5%	9%	
Health Factors				2
Health Behaviors				3
Adult obesity	28%	28%	31%	
Adults who currently smoke	15%	13%	18%	
Adults who are not physically active	28%	26%	31%	
Adults eating <1 fruit/vegetable serving per day	6%	6%	8%	
Adults reporting heavy drinking	6%	4%	6%	
Adults reporting binge drinking	18%	14%	19%	
Population living in food desert	0%	0%	8%	
Teen births per 1,000 population	0.0	0.0	16.3	

Clinical Care				2
Population without health insurance	3%	1%	13%	
Adults with primary care doctor	88%	89%	81%	
Adults with routine checkup in past year	73%	75%	69%	
Preventable ED visits	3%	3%	6%	
Social & Economic Factors				3
Adults with high school diploma	97%	99%	86%	
Adults with bachelor's degree	75%	77%	37%	
Unemployment rate	3%	3%	10%	
Median household income	\$103,622	\$147,361	\$56,902	
Income inequality ²	.55	.38	.50	
Children in poverty	3%	2%	24%	
Single-parent households	6%	4%	10%	
Population without U.S. citizenship	2%	0%	11%	
Physical Environment				15
High risk for pediatric blood lead poisoning	Yes	No	N/A	
Average daily particulate matter ³ ($\mu\text{g}/\text{m}^3$)	12.1	5.8	11.9	
Vacant housing units	7%	4%	10%	
Substandard housing units	35%	19%	41%	
Commute to work over 1 hour	8%	8%	14%	

1. Chronic Obstructive Pulmonary Disease

2. Gini Index: value of zero indicates perfect equality of income and value of one indicates perfect inequality

3. Not to exceed $35 \mu\text{g}/\text{m}^3$ per the Environmental Protection Agency daily standard

4. Zip Code 60526 (LaGrange Park)

	Zip Code 60526	Top Performer	Cook County	Rank (of 27)
Overall Rank				4
Health Outcomes				11
Chronic Conditions				12
Adults with asthma	7%	6%	8%	
Adults with COPD ¹	6%	4%	6%	
Adults with diabetes	11%	10%	12%	
Adults who have had a stroke	3%	2%	3%	
Adults with high blood pressure	34%	26%	34%	
Quality of Life				8
Adults with fair or poor overall health status	16%	13%	18%	
Adults with frequent poor physical health days	21%	19%	22%	
Adults with frequent poor mental health days	19%	16%	20%	
Low birthweight or premature births	7%	5%	9%	
Health Factors				5
Health Behaviors				18
Adult obesity	30%	28%	31%	
Adults who currently smoke	17%	13%	18%	
Adults who are not physically active	29%	26%	31%	
Adults eating <1 fruit/vegetable serving per day	7%	6%	8%	
Adults reporting heavy drinking	6%	4%	6%	
Adults reporting binge drinking	20%	14%	19%	
Population living in food desert	8%	0%	8%	
Teen births per 1,000 population	0.0	0.0	16.3	

Clinical Care				8
Population without health insurance	5%	1%	13%	
Adults with primary care doctor	84%	89%	81%	
Adults with routine checkup in past year	69%	75%	69%	
Preventable ED visits	4%	3%	6%	
Social & Economic Factors				4
Adults with high school diploma	96%	99%	86%	
Adults with bachelor's degree	51%	77%	37%	
Unemployment rate	6%	3%	10%	
Median household income	\$84,342	\$147,361	\$56,902	
Income inequality ²	.44	.38	.50	
Children in poverty	2%	2%	24%	
Single-parent households	5%	4%	10%	
Population without U.S. citizenship	5%	0%	11%	
Physical Environment				2
High risk for pediatric blood lead poisoning	No	No	N/A	
Average daily particulate matter ³ (µg/m ³)	8.8	5.8	11.9	
Vacant housing units	5%	4%	10%	
Substandard housing units	30%	19%	41%	
Commute to work over 1 hour	12%	8%	14%	

1. Chronic Obstructive Pulmonary Disease

2. Gini Index: value of zero indicates perfect equality of income and value of one indicates perfect inequality

3. Not to exceed 35 µg/m³ per the Environmental Protection Agency daily standard

5. Zip Code 60513 (Brookfield)

	Zip Code 60513	Top Performer	Cook County	Rank (of 27)
Overall Rank				5
Health Outcomes				7
Chronic Conditions				10
Adults with asthma	7%	6%	8%	
Adults with COPD ¹	6%	4%	6%	
Adults with diabetes	10%	10%	12%	
Adults who have had a stroke	3%	2%	3%	
Adults with high blood pressure	33%	26%	34%	
Quality of Life				9
Adults with fair or poor overall health status	15%	13%	18%	
Adults with frequent poor physical health days	21%	19%	22%	
Adults with frequent poor mental health days	18%	16%	20%	
Low birthweight or premature births	8%	5%	9%	
Health Factors				8
Health Behaviors				9
Adult obesity	29%	28%	31%	
Adults who currently smoke	16%	13%	18%	
Adults who are not physically active	28%	26%	31%	
Adults eating <1 fruit/vegetable serving per day	6%	6%	8%	
Adults reporting heavy drinking	7%	4%	6%	
Adults reporting binge drinking	20%	14%	19%	
Population living in food desert	14%	0%	8%	
Teen births per 1,000 population	0.0	0.0	16.3	

Clinical Care				9
Population without health insurance	6%	1%	13%	
Adults with primary care doctor	85%	89%	81%	
Adults with routine checkup in past year	69%	75%	69%	
Preventable ED visits	5%	3%	6%	
Social & Economic Factors				6
Adults with high school diploma	94%	99%	86%	
Adults with bachelor's degree	37%	77%	37%	
Unemployment rate	5%	3%	10%	
Median household income	\$75,336	\$147,361	\$56,902	
Income inequality ²	.42	.38	.50	
Children in poverty	13%	2%	24%	
Single-parent households	8%	4%	10%	
Population without U.S. citizenship	3%	0%	11%	
Physical Environment				11
High risk for pediatric blood lead poisoning	Yes	No	N/A	
Average daily particulate matter ³ (µg/m ³)	10.2	5.8	11.9	
Vacant housing units	9%	4%	10%	
Substandard housing units	31%	19%	41%	
Commute to work over 1 hour	11%	8%	14%	

1. Chronic Obstructive Pulmonary Disease

2. Gini Index: value of zero indicates perfect equality of income and value of one indicates perfect inequality

3. Not to exceed 35 µg/m³ per the Environmental Protection Agency daily standard

6. Zip Code 60525

(LaGrange, Countryside, Hodgkins, Indian Head Park, McCook)

	Zip Code 60525	Top Performer	Cook County	Rank (of 27)
Overall Rank				6
Health Outcomes				14
Chronic Conditions				13
Adults with asthma	7%	6%	8%	
Adults with COPD ¹	6%	4%	6%	
Adults with diabetes	11%	10%	12%	
Adults who have had a stroke	3%	2%	3%	
Adults with high blood pressure	35%	26%	34%	
Quality of Life				13
Adults with fair or poor overall health status	15%	13%	18%	
Adults with frequent poor physical health days	21%	19%	22%	
Adults with frequent poor mental health days	18%	16%	20%	
Low birthweight or premature births	9%	5%	9%	
Health Factors				4
Health Behaviors				7
Adult obesity	29%	28%	31%	
Adults who currently smoke	16%	13%	18%	
Adults who are not physically active	28%	26%	31%	
Adults eating <1 fruit/vegetable serving per day	6%	6%	8%	
Adults reporting heavy drinking	6%	4%	6%	
Adults reporting binge drinking	19%	14%	19%	
Population living in food desert	11%	0%	8%	
Teen births per 1,000 population	0.0	0.0	16.3	

Clinical Care				6
Population without health insurance	6%	1%	13%	
Adults with primary care doctor	86%	89%	81%	
Adults with routine checkup in past year	70%	75%	69%	
Preventable ED visits	5%	3%	6%	
Social & Economic Factors				7
Adults with high school diploma	93%	99%	86%	
Adults with bachelor's degree	48%	77%	37%	
Unemployment rate	6%	3%	10%	
Median household income	\$79,145	\$147,361	\$56,902	
Income inequality ²	.50	.38	.50	
Children in poverty	9%	2%	24%	
Single-parent households	6%	4%	10%	
Population without U.S. citizenship	5%	0%	11%	
Physical Environment				3
High risk for pediatric blood lead poisoning	No	No	N/A	
Average daily particulate matter ³ (µg/m ³)	8.2	5.8	11.9	
Vacant housing units	6%	4%	10%	
Substandard housing units	32%	19%	41%	
Commute to work over 1 hour	12%	8%	14%	

1. Chronic Obstructive Pulmonary Disease

2. Gini Index: value of zero indicates perfect equality of income and value of one indicates perfect inequality

3. Not to exceed 35 µg/m³ per the Environmental Protection Agency daily standard

7. Zip Code 60301 (Oak Park)

	Zip Code 60301	Top Performer	Cook County	Rank (of 27)
Overall Rank				7
Health Outcomes				10
Chronic Conditions				16
Adults with asthma	7%	6%	8%	
Adults with COPD ¹	6%	4%	6%	
Adults with diabetes	12%	10%	12%	
Adults who have had a stroke	3%	2%	3%	
Adults with high blood pressure	36%	26%	34%	
Quality of Life				4
Adults with fair or poor overall health status	16%	13%	18%	
Adults with frequent poor physical health days	20%	19%	22%	
Adults with frequent poor mental health days	18%	16%	20%	
Low birthweight or premature births	7%	5%	9%	
Health Factors				9
Health Behaviors				5
Adult obesity	30%	28%	31%	
Adults who currently smoke	16%	13%	18%	
Adults who are not physically active	29%	26%	31%	
Adults eating <1 fruit/vegetable serving per day	7%	6%	8%	
Adults reporting heavy drinking	6%	4%	6%	
Adults reporting binge drinking	18%	14%	19%	
Population living in food desert	0%	0%	8%	
Teen births per 1,000 population	0.0	0.0	16.3	

Clinical Care				4
Population without health insurance	9%	1%	13%	
Adults with primary care doctor	86%	89%	81%	
Adults with routine checkup in past year	71%	75%	69%	
Preventable ED visits	4%	3%	6%	
Social & Economic Factors				11
Adults with high school diploma	93%	99%	86%	
Adults with bachelor's degree	64%	77%	37%	
Unemployment rate	9%	3%	10%	
Median household income	\$70,040	\$147,361	\$56,902	
Income inequality ²	.49	.38	.50	
Children in poverty	22%	2%	24%	
Single-parent households	6%	4%	10%	
Population without U.S. citizenship	7%	0%	11%	
Physical Environment				18
High risk for pediatric blood lead poisoning	Yes	No	N/A	
Average daily particulate matter ³ (µg/m ³)	7.8	5.8	11.9	
Vacant housing units	19%	4%	10%	
Substandard housing units	44%	19%	41%	
Commute to work over 1 hour	13%	8%	14%	

1. Chronic Obstructive Pulmonary Disease

2. Gini Index: value of zero indicates perfect equality of income and value of one indicates perfect inequality

3. Not to exceed 35 µg/m³ per the Environmental Protection Agency daily standard

8. Zip Code 60546 (Riverside, North Riverside)

	Zip Code 60546	Top Performer	Cook County	Rank (of 27)
Overall Rank				8
Health Outcomes				19
Chronic Conditions				20
Adults with asthma	7%	6%	8%	
Adults with COPD ¹	6%	4%	6%	
Adults with diabetes	12%	10%	12%	
Adults who have had a stroke	3%	2%	3%	
Adults with high blood pressure	36%	26%	34%	
Quality of Life				10
Adults with fair or poor overall health status	17%	13%	18%	
Adults with frequent poor physical health days	22%	19%	22%	
Adults with frequent poor mental health days	18%	16%	20%	
Low birthweight or premature births	7%	5%	9%	
Health Factors				7
Health Behaviors				4
Adult obesity	30%	28%	31%	
Adults who currently smoke	16%	13%	18%	
Adults who are not physically active	29%	26%	31%	
Adults eating <1 fruit/vegetable serving per day	6%	6%	8%	
Adults reporting heavy drinking	6%	4%	6%	
Adults reporting binge drinking	19%	14%	19%	
Population living in food desert	0%	0%	8%	
Teen births per 1,000 population	0.0	0.0	16.3	

Clinical Care				5
Population without health insurance	7%	1%	13%	
Adults with primary care doctor	85%	89%	81%	
Adults with routine checkup in past year	71%	75%	69%	
Preventable ED visits	4%	3%	6%	
Social & Economic Factors				9
Adults with high school diploma	95%	99%	86%	
Adults with bachelor's degree	46%	77%	37%	
Unemployment rate	8%	3%	10%	
Median household income	\$72,481	\$147,361	\$56,902	
Income inequality ²	.51	.38	.50	
Children in poverty	8%	2%	24%	
Single-parent households	6%	4%	10%	
Population without U.S. citizenship	4%	0%	11%	
Physical Environment				7
High risk for pediatric blood lead poisoning	Yes	No	N/A	
Average daily particulate matter ³ ($\mu\text{g}/\text{m}^3$)	6.9	5.8	11.9	
Vacant housing units	6%	4%	10%	
Substandard housing units	36%	19%	41%	
Commute to work over 1 hour	11%	8%	14%	

1. Chronic Obstructive Pulmonary Disease

2. Gini Index: value of zero indicates perfect equality of income and value of one indicates perfect inequality

3. Not to exceed $35 \mu\text{g}/\text{m}^3$ per the Environmental Protection Agency daily standard

9. Zip Code 60302 (Oak Park)

	Zip Code 60302	Top Performer	Cook County	Rank (of 27)
Overall Rank				9
Health Outcomes				12
Chronic Conditions				9
Adults with asthma	8%	6%	8%	
Adults with COPD ¹	6%	4%	6%	
Adults with diabetes	11%	10%	12%	
Adults who have had a stroke	3%	2%	3%	
Adults with high blood pressure	33%	26%	34%	
Quality of Life				14
Adults with fair or poor overall health status	15%	13%	18%	
Adults with frequent poor physical health days	20%	19%	22%	
Adults with frequent poor mental health days	19%	16%	20%	
Low birthweight or premature births	9%	5%	9%	
Health Factors				10
Health Behaviors				12
Adult obesity	31%	28%	31%	
Adults who currently smoke	17%	13%	18%	
Adults who are not physically active	28%	26%	31%	
Adults eating <1 fruit/vegetable serving per day	7%	6%	8%	
Adults reporting heavy drinking	6%	4%	6%	
Adults reporting binge drinking	20%	14%	19%	
Population living in food desert	0%	0%	8%	
Teen births per 1,000 population	10.1	0.0	16.3	

Clinical Care				10
Population without health insurance	5%	1%	13%	
Adults with primary care doctor	84%	89%	81%	
Adults with routine checkup in past year	70%	75%	69%	
Preventable ED visits	5%	3%	6%	
Social & Economic Factors				8
Adults with high school diploma	97%	99%	86%	
Adults with bachelor's degree	67%	77%	37%	
Unemployment rate	8%	3%	10%	
Median household income	\$79,167	\$147,361	\$56,902	
Income inequality ²	.52	.38	.50	
Children in poverty	8%	2%	24%	
Single-parent households	8%	4%	10%	
Population without U.S. citizenship	5%	0%	11%	
Physical Environment				12
High risk for pediatric blood lead poisoning	Yes	No	N/A	
Average daily particulate matter ³ ($\mu\text{g}/\text{m}^3$)	9.5	5.8	11.9	
Vacant housing units	6%	4%	10%	
Substandard housing units	35%	19%	41%	
Commute to work over 1 hour	12%	8%	14%	

1. Chronic Obstructive Pulmonary Disease

2. Gini Index: value of zero indicates perfect equality of income and value of one indicates perfect inequality

3. Not to exceed $35 \mu\text{g}/\text{m}^3$ per the Environmental Protection Agency daily standard

10. Zip Code 60154 (Westchester)

	Zip Code 60154	Top Performer	Cook County	Rank (of 27)
Overall Rank				10
Health Outcomes				23
Chronic Conditions				24
Adults with asthma	7%	6%	8%	
Adults with COPD ¹	7%	4%	6%	
Adults with diabetes	14%	10%	12%	
Adults who have had a stroke	4%	2%	3%	
Adults with high blood pressure	40%	26%	34%	
Quality of Life				15
Adults with fair or poor overall health status	17%	13%	18%	
Adults with frequent poor physical health days	22%	19%	22%	
Adults with frequent poor mental health days	17%	16%	20%	
Low birthweight or premature births	9%	5%	9%	
Health Factors				3
Health Behaviors				2
Adult obesity	30%	28%	31%	
Adults who currently smoke	14%	13%	18%	
Adults who are not physically active	30%	26%	31%	
Adults eating <1 fruit/vegetable serving per day	6%	6%	8%	
Adults reporting heavy drinking	6%	4%	6%	
Adults reporting binge drinking	16%	14%	19%	
Population living in food desert	3%	0%	8%	
Teen births per 1,000 population	0.0	0.0	16.3	

Clinical Care				3
Population without health insurance	6%	1%	13%	
Adults with primary care doctor	88%	89%	81%	
Adults with routine checkup in past year	74%	75%	69%	
Preventable ED visits	5%	3%	6%	
Social & Economic Factors				5
Adults with high school diploma	93%	99%	86%	
Adults with bachelor's degree	38%	77%	37%	
Unemployment rate	6%	3%	10%	
Median household income	\$72,039	\$147,361	\$56,902	
Income inequality ²	.41	.38	.50	
Children in poverty	8%	2%	24%	
Single-parent households	5%	4%	10%	
Population without U.S. citizenship	4%	0%	11%	
Physical Environment				6
High risk for pediatric blood lead poisoning	No	No	N/A	
Average daily particulate matter ³ (µg/m ³)	10.4	5.8	11.9	
Vacant housing units	6%	4%	10%	
Substandard housing units	31%	19%	41%	
Commute to work over 1 hour	13%	8%	14%	

1. Chronic Obstructive Pulmonary Disease

2. Gini Index: value of zero indicates perfect equality of income and value of one indicates perfect inequality

3. Not to exceed 35 µg/m³ per the Environmental Protection Agency daily standard

11. Zip Code 60638

(Bedford Park, Clearing, Forest View, Stickney)

	Zip Code 60638	Top Performer	Cook County	Rank (of 27)
Overall Rank				11
Health Outcomes				6
Chronic Conditions				11
Adults with asthma	7%	6%	8%	
Adults with COPD ¹	6%	4%	6%	
Adults with diabetes	11%	10%	12%	
Adults who have had a stroke	3%	2%	3%	
Adults with high blood pressure	34%	26%	34%	
Quality of Life				7
Adults with fair or poor overall health status	17%	13%	18%	
Adults with frequent poor physical health days	22%	19%	22%	
Adults with frequent poor mental health days	19%	16%	20%	
Low birthweight or premature births	7%	5%	9%	
Health Factors				12
Health Behaviors				11
Adult obesity	30%	28%	31%	
Adults who currently smoke	16%	13%	18%	
Adults who are not physically active	32%	26%	31%	
Adults eating <1 fruit/vegetable serving per day	8%	6%	8%	
Adults reporting heavy drinking	6%	4%	6%	
Adults reporting binge drinking	20%	14%	19%	
Population living in food desert	4%	0%	8%	
Teen births per 1,000 population	3.2	0.0	16.3	

Clinical Care				16
Population without health insurance	11%	1%	13%	
Adults with primary care doctor	80%	89%	81%	
Adults with routine checkup in past year	67%	75%	69%	
Preventable ED visits	5%	3%	6%	
Social & Economic Factors				12
Adults with high school diploma	83%	99%	86%	
Adults with bachelor's degree	20%	77%	37%	
Unemployment rate	10%	3%	10%	
Median household income	\$64,408	\$147,361	\$56,902	
Income inequality ²	.39	.38	.50	
Children in poverty	13%	2%	24%	
Single-parent households	8%	4%	10%	
Population without U.S. citizenship	9%	0%	11%	
Physical Environment				19
High risk for pediatric blood lead poisoning	Yes	No	N/A	
Average daily particulate matter ³ (µg/m ³)	10.4	5.8	11.9	
Vacant housing units	6%	4%	10%	
Substandard housing units	34%	19%	41%	
Commute to work over 1 hour	17%	8%	14%	

1. Chronic Obstructive Pulmonary Disease

2. Gini Index: value of zero indicates perfect equality of income and value of one indicates perfect inequality

3. Not to exceed 35 µg/m³ per the Environmental Protection Agency daily standard

12. Zip Code 60534 (Lyons)

	Zip Code 60534	Top Performer	Cook County	Rank (of 27)
Overall Rank				12
Health Outcomes				9
Chronic Conditions				15
Adults with asthma	7%	6%	8%	
Adults with COPD ¹	6%	4%	6%	
Adults with diabetes	12%	10%	12%	
Adults who have had a stroke	3%	2%	3%	
Adults with high blood pressure	34%	26%	34%	
Quality of Life				3
Adults with fair or poor overall health status	19%	13%	18%	
Adults with frequent poor physical health days	22%	19%	22%	
Adults with frequent poor mental health days	19%	16%	20%	
Low birthweight or premature births	5%	5%	9%	
Health Factors				13
Health Behaviors				15
Adult obesity	31%	28%	31%	
Adults who currently smoke	16%	13%	18%	
Adults who are not physically active	31%	26%	31%	
Adults eating <1 fruit/vegetable serving per day	7%	6%	8%	
Adults reporting heavy drinking	6%	4%	6%	
Adults reporting binge drinking	19%	14%	19%	
Population living in food desert	49%	0%	8%	
Teen births per 1,000 population	0.0	0.0	16.3	

Clinical Care				19
Population without health insurance	16%	1%	13%	
Adults with primary care doctor	82%	89%	81%	
Adults with routine checkup in past year	68%	75%	69%	
Preventable ED visits	5%	3%	6%	
Social & Economic Factors				13
Adults with high school diploma	86%	99%	86%	
Adults with bachelor's degree	17%	77%	37%	
Unemployment rate	6%	3%	10%	
Median household income	\$45,825	\$147,361	\$56,902	
Income inequality ²	.44	.38	.50	
Children in poverty	18%	2%	24%	
Single-parent households	10%	4%	10%	
Population without U.S. citizenship	11%	0%	11%	
Physical Environment				10
High risk for pediatric blood lead poisoning	Yes	No	N/A	
Average daily particulate matter ³ (µg/m ³)	6.1	5.8	11.9	
Vacant housing units	4%	4%	10%	
Substandard housing units	53%	19%	41%	
Commute to work over 1 hour	12%	8%	14%	

1. Chronic Obstructive Pulmonary Disease

2. Gini Index: value of zero indicates perfect equality of income and value of one indicates perfect inequality

3. Not to exceed 35 µg/m³ per the Environmental Protection Agency daily standard

13. Zip Code 60457 (Hickory Hills)

	Zip Code 60457	Top Performer	Cook County	Rank (of 27)
Overall Rank				13
Health Outcomes				17
Chronic Conditions				22
Adults with asthma	7%	6%	8%	
Adults with COPD ¹	7%	4%	6%	
Adults with diabetes	12%	10%	12%	
Adults who have had a stroke	3%	2%	3%	
Adults with high blood pressure	37%	26%	34%	
Quality of Life				2
Adults with fair or poor overall health status	17%	13%	18%	
Adults with frequent poor physical health days	22%	19%	22%	
Adults with frequent poor mental health days	19%	16%	20%	
Low birthweight or premature births	6%	5%	9%	
Health Factors				11
Health Behaviors				13
Adult obesity	30%	28%	31%	
Adults who currently smoke	17%	13%	18%	
Adults who are not physically active	30%	26%	31%	
Adults eating <1 fruit/vegetable serving per day	7%	6%	8%	
Adults reporting heavy drinking	6%	4%	6%	
Adults reporting binge drinking	19%	14%	19%	
Population living in food desert	8%	0%	8%	
Teen births per 1,000 population	0.0	0.0	16.3	

Clinical Care				7
Population without health insurance	11%	1%	13%	
Adults with primary care doctor	86%	89%	81%	
Adults with routine checkup in past year	71%	75%	69%	
Preventable ED visits	4%	3%	6%	
Social & Economic Factors				16
Adults with high school diploma	87%	99%	86%	
Adults with bachelor's degree	22%	77%	37%	
Unemployment rate	10%	3%	10%	
Median household income	\$61,708	\$147,361	\$56,902	
Income inequality ²	.43	.38	.50	
Children in poverty	25%	2%	24%	
Single-parent households	7%	4%	10%	
Population without U.S. citizenship	8%	0%	11%	
Physical Environment				4
High risk for pediatric blood lead poisoning	No	No	N/A	
Average daily particulate matter ³ ($\mu\text{g}/\text{m}^3$)	5.8	5.8	11.9	
Vacant housing units	10%	4%	10%	
Substandard housing units	37%	19%	41%	
Commute to work over 1 hour	14%	8%	14%	

1. Chronic Obstructive Pulmonary Disease

2. Gini Index: value of zero indicates perfect equality of income and value of one indicates perfect inequality

3. Not to exceed $35 \mu\text{g}/\text{m}^3$ per the Environmental Protection Agency daily standard

14. Zip Code 60804 (Cicero)

	Zip Code 60804	Top Performer	Cook County	Rank (of 27)
Overall Rank				14
Health Outcomes				2
Chronic Conditions				1
Adults with asthma	6%	6%	8%	
Adults with COPD ¹	4%	4%	6%	
Adults with diabetes	11%	10%	12%	
Adults who have had a stroke	2%	2%	3%	
Adults with high blood pressure	26%	26%	34%	
Quality of Life				17
Adults with fair or poor overall health status	18%	13%	18%	
Adults with frequent poor physical health days	20%	19%	22%	
Adults with frequent poor mental health days	20%	16%	20%	
Low birthweight or premature births	8%	5%	9%	
Health Factors				22
Health Behaviors				17
Adult obesity	30%	28%	31%	
Adults who currently smoke	17%	13%	18%	
Adults who are not physically active	33%	26%	31%	
Adults eating <1 fruit/vegetable serving per day	7%	6%	8%	
Adults reporting heavy drinking	5%	4%	6%	
Adults reporting binge drinking	20%	14%	19%	
Population living in food desert	4%	0%	8%	
Teen births per 1,000 population	29.7	0.0	16.3	

Clinical Care				24
Population without health insurance	23%	1%	13%	
Adults with primary care doctor	74%	89%	81%	
Adults with routine checkup in past year	63%	75%	69%	
Preventable ED visits	5%	3%	6%	
Social & Economic Factors				22
Adults with high school diploma	60%	99%	86%	
Adults with bachelor's degree	7%	77%	37%	
Unemployment rate	10%	3%	10%	
Median household income	\$42,345	\$147,361	\$56,902	
Income inequality ²	.40	.38	.50	
Children in poverty	32%	2%	24%	
Single-parent households	16%	4%	10%	
Population without U.S. citizenship	27%	0%	11%	
Physical Environment				21
High risk for pediatric blood lead poisoning	Yes	No	N/A	
Average daily particulate matter ³ (µg/m ³)	10.9	5.8	11.9	
Vacant housing units	10%	4%	10%	
Substandard housing units	54%	19%	41%	
Commute to work over 1 hour	12%	8%	14%	

1. Chronic Obstructive Pulmonary Disease

2. Gini Index: value of zero indicates perfect equality of income and value of one indicates perfect inequality

3. Not to exceed 35 µg/m³ per the Environmental Protection Agency daily standard

15. Zip Code 60402 (Berwyn, Forest View, Stickney)

	Zip Code 60402	Top Performer	Cook County	Rank (of 27)
Overall Rank				15
Health Outcomes				8
Chronic Conditions				4
Adults with asthma	7%	6%	8%	
Adults with COPD ¹	5%	4%	6%	
Adults with diabetes	11%	10%	12%	
Adults who have had a stroke	2%	2%	3%	
Adults with high blood pressure	30%	26%	34%	
Quality of Life				19
Adults with fair or poor overall health status	18%	13%	18%	
Adults with frequent poor physical health days	21%	19%	22%	
Adults with frequent poor mental health days	20%	16%	20%	
Low birthweight or premature births	9%	5%	9%	
Health Factors				18
Health Behaviors				16
Adult obesity	31%	28%	31%	
Adults who currently smoke	17%	13%	18%	
Adults who are not physically active	32%	26%	31%	
Adults eating <1 fruit/vegetable serving per day	7%	6%	8%	
Adults reporting heavy drinking	5%	4%	6%	
Adults reporting binge drinking	20%	14%	19%	
Population living in food desert	0%	0%	8%	
Teen births per 1,000 population	24.6	0.0	16.3	

Clinical Care				20
Population without health insurance	14%	1%	13%	
Adults with primary care doctor	79%	89%	81%	
Adults with routine checkup in past year	66%	75%	69%	
Preventable ED visits	5%	3%	6%	
Social & Economic Factors				15
Adults with high school diploma	79%	99%	86%	
Adults with bachelor's degree	20%	77%	37%	
Unemployment rate	9%	3%	10%	
Median household income	\$59,801	\$147,361	\$56,902	
Income inequality ²	.40	.38	.50	
Children in poverty	20%	2%	24%	
Single-parent households	12%	4%	10%	
Population without U.S. citizenship	13%	0%	11%	
Physical Environment				20
High risk for pediatric blood lead poisoning	Yes	No	N/A	
Average daily particulate matter ³ ($\mu\text{g}/\text{m}^3$)	11.3	5.8	11.9	
Vacant housing units	9%	4%	10%	
Substandard housing units	41%	19%	41%	
Commute to work over 1 hour	12%	8%	14%	

1. Chronic Obstructive Pulmonary Disease

2. Gini Index: value of zero indicates perfect equality of income and value of one indicates perfect inequality

3. Not to exceed $35 \mu\text{g}/\text{m}^3$ per the Environmental Protection Agency daily standard

16. Zip Code 60459 (Burbank)

	Zip Code 60459	Top Performer	Cook County	Rank (of 27)
Overall Rank				16
Health Outcomes				16
Chronic Conditions				17
Adults with asthma	7%	6%	8%	
Adults with COPD ¹	6%	4%	6%	
Adults with diabetes	12%	10%	12%	
Adults who have had a stroke	3%	2%	3%	
Adults with high blood pressure	35%	26%	34%	
Quality of Life				11
Adults with fair or poor overall health status	17%	13%	18%	
Adults with frequent poor physical health days	22%	19%	22%	
Adults with frequent poor mental health days	19%	16%	20%	
Low birthweight or premature births	7%	5%	9%	
Health Factors				14
Health Behaviors				19
Adult obesity	30%	28%	31%	
Adults who currently smoke	16%	13%	18%	
Adults who are not physically active	30%	26%	31%	
Adults eating <1 fruit/vegetable serving per day	6%	6%	8%	
Adults reporting heavy drinking	6%	4%	6%	
Adults reporting binge drinking	19%	14%	19%	
Population living in food desert	15%	0%	8%	
Teen births per 1,000 population	39.9	0.0	16.3	

Clinical Care				13
Population without health insurance	15%	1%	13%	
Adults with primary care doctor	84%	89%	81%	
Adults with routine checkup in past year	69%	75%	69%	
Preventable ED visits	4%	3%	6%	
Social & Economic Factors				14
Adults with high school diploma	80%	99%	86%	
Adults with bachelor's degree	13%	77%	37%	
Unemployment rate	9%	3%	10%	
Median household income	\$54,862	\$147,361	\$56,902	
Income inequality ²	.40	.38	.50	
Children in poverty	17%	2%	24%	
Single-parent households	7%	4%	10%	
Population without U.S. citizenship	12%	0%	11%	
Physical Environment				13
High risk for pediatric blood lead poisoning	No	No	N/A	
Average daily particulate matter ³ (µg/m ³)	11.6	5.8	11.9	
Vacant housing units	4%	4%	10%	
Substandard housing units	42%	19%	41%	
Commute to work over 1 hour	15%	8%	14%	

1. Chronic Obstructive Pulmonary Disease

2. Gini Index: value of zero indicates perfect equality of income and value of one indicates perfect inequality

3. Not to exceed 35 µg/m³ per the Environmental Protection Agency daily standard

17. Zip Code 60501 (Summit, Argo)

	Zip Code 60501	Top Performer	Cook County	Rank (of 27)
Overall Rank				17
Health Outcomes				4
Chronic Conditions				2
Adults with asthma	6%	6%	8%	
Adults with COPD ¹	4%	4%	6%	
Adults with diabetes	11%	10%	12%	
Adults who have had a stroke	2%	2%	3%	
Adults with high blood pressure	29%	26%	34%	
Quality of Life				20
Adults with fair or poor overall health status	18%	13%	18%	
Adults with frequent poor physical health days	20%	19%	22%	
Adults with frequent poor mental health days	19%	16%	20%	
Low birthweight or premature births	10%	5%	9%	
Health Factors				20
Health Behaviors				8
Adult obesity	31%	28%	31%	
Adults who currently smoke	16%	13%	18%	
Adults who are not physically active	32%	26%	31%	
Adults eating <1 fruit/vegetable serving per day	7%	6%	8%	
Adults reporting heavy drinking	5%	4%	6%	
Adults reporting binge drinking	20%	14%	19%	
Population living in food desert	0%	0%	8%	
Teen births per 1,000 population	0.0	0.0	16.3	

Clinical Care				23
Population without health insurance	22%	1%	13%	
Adults with primary care doctor	76%	89%	81%	
Adults with routine checkup in past year	65%	75%	69%	
Preventable ED visits	6%	3%	6%	
Social & Economic Factors				20
Adults with high school diploma	71%	99%	86%	
Adults with bachelor's degree	12%	77%	37%	
Unemployment rate	13%	3%	10%	
Median household income	\$48,014	\$147,361	\$56,902	
Income inequality ²	.39	.38	.50	
Children in poverty	25%	2%	24%	
Single-parent households	12%	4%	10%	
Population without U.S. citizenship	22%	0%	11%	
Physical Environment				16
High risk for pediatric blood lead poisoning	Yes	No	N/A	
Average daily particulate matter ³ (µg/m ³)	8.5	5.8	11.9	
Vacant housing units	13%	4%	10%	
Substandard housing units	52%	19%	41%	
Commute to work over 1 hour	9%	8%	14%	

1. Chronic Obstructive Pulmonary Disease

2. Gini Index: value of zero indicates perfect equality of income and value of one indicates perfect inequality

3. Not to exceed 35 µg/m³ per the Environmental Protection Agency daily standard

18. Zip Code 60455 (Bridgeview)

	Zip Code 60455	Top Performer	Cook County	Rank (of 27)
Overall Rank				18
Health Outcomes				13
Chronic Conditions				14
Adults with asthma	7%	6%	8%	
Adults with COPD ¹	7%	4%	6%	
Adults with diabetes	11%	10%	12%	
Adults who have had a stroke	3%	2%	3%	
Adults with high blood pressure	33%	26%	34%	
Quality of Life				12
Adults with fair or poor overall health status	16%	13%	18%	
Adults with frequent poor physical health days	21%	19%	22%	
Adults with frequent poor mental health days	20%	16%	20%	
Low birthweight or premature births	7%	5%	9%	
Health Factors				17
Health Behaviors				20
Adult obesity	30%	28%	31%	
Adults who currently smoke	18%	13%	18%	
Adults who are not physically active	29%	26%	31%	
Adults eating <1 fruit/vegetable serving per day	7%	6%	8%	
Adults reporting heavy drinking	6%	4%	6%	
Adults reporting binge drinking	20%	14%	19%	
Population living in food desert	3%	0%	8%	
Teen births per 1,000 population	0.0	0.0	16.3	

Clinical Care				14
Population without health insurance	13%	1%	13%	
Adults with primary care doctor	84%	89%	81%	
Adults with routine checkup in past year	68%	75%	69%	
Preventable ED visits	4%	3%	6%	
Social & Economic Factors				19
Adults with high school diploma	80%	99%	86%	
Adults with bachelor's degree	15%	77%	37%	
Unemployment rate	11%	3%	10%	
Median household income	\$52,568	\$147,361	\$56,902	
Income inequality ²	.43	.38	.50	
Children in poverty	32%	2%	24%	
Single-parent households	7%	4%	10%	
Population without U.S. citizenship	12%	0%	11%	
Physical Environment				5
High risk for pediatric blood lead poisoning	No	No	N/A	
Average daily particulate matter ³ ($\mu\text{g}/\text{m}^3$)	6.7	5.8	11.9	
Vacant housing units	7%	4%	10%	
Substandard housing units	48%	19%	41%	
Commute to work over 1 hour	12%	8%	14%	

1. Chronic Obstructive Pulmonary Disease

2. Gini Index: value of zero indicates perfect equality of income and value of one indicates perfect inequality

3. Not to exceed 35 $\mu\text{g}/\text{m}^3$ per the Environmental Protection Agency daily standard

19. Zip Code 60130 (Forest Park)

	Zip Code 60130	Top Performer	Cook County	Rank (of 27)
Overall Rank				19
Health Outcomes				20
Chronic Conditions				19
Adults with asthma	8%	6%	8%	
Adults with COPD ¹	6%	4%	6%	
Adults with diabetes	12%	10%	12%	
Adults who have had a stroke	3%	2%	3%	
Adults with high blood pressure	35%	26%	34%	
Quality of Life				16
Adults with fair or poor overall health status	17%	13%	18%	
Adults with frequent poor physical health days	21%	19%	22%	
Adults with frequent poor mental health days	20%	16%	20%	
Low birthweight or premature births	8%	5%	9%	
Health Factors				15
Health Behaviors				21
Adult obesity	32%	28%	31%	
Adults who currently smoke	18%	13%	18%	
Adults who are not physically active	30%	26%	31%	
Adults eating <1 fruit/vegetable serving per day	8%	6%	8%	
Adults reporting heavy drinking	6%	4%	6%	
Adults reporting binge drinking	19%	14%	19%	
Population living in food desert	0%	0%	8%	
Teen births per 1,000 population	0.0	0.0	16.3	

Clinical Care				17
Population without health insurance	13%	1%	13%	
Adults with primary care doctor	82%	89%	81%	
Adults with routine checkup in past year	70%	75%	69%	
Preventable ED visits	6%	3%	6%	
Social & Economic Factors				10
Adults with high school diploma	94%	99%	86%	
Adults with bachelor's degree	49%	77%	37%	
Unemployment rate	10%	3%	10%	
Median household income	\$51,552	\$147,361	\$56,902	
Income inequality ²	.46	.38	.50	
Children in poverty	15%	2%	24%	
Single-parent households	7%	4%	10%	
Population without U.S. citizenship	8%	0%	11%	
Physical Environment				14
High risk for pediatric blood lead poisoning	No	No	N/A	
Average daily particulate matter ³ (µg/m ³)	12.2	5.8	11.9	
Vacant housing units	7%	4%	10%	
Substandard housing units	39%	19%	41%	
Commute to work over 1 hour	14%	8%	14%	

1. Chronic Obstructive Pulmonary Disease

2. Gini Index: value of zero indicates perfect equality of income and value of one indicates perfect inequality

3. Not to exceed 35 µg/m³ per the Environmental Protection Agency daily standard

20. Zip Code 60652 (Chicago – Ashburn Park)

	Zip Code 60652	Top Performer	Cook County	Rank (of 27)
Overall Rank				20
Health Outcomes				22
Chronic Conditions				18
Adults with asthma	7%	6%	8%	
Adults with COPD ¹	5%	4%	6%	
Adults with diabetes	13%	10%	12%	
Adults who have had a stroke	3%	2%	3%	
Adults with high blood pressure	38%	26%	34%	
Quality of Life				22
Adults with fair or poor overall health status	18%	13%	18%	
Adults with frequent poor physical health days	22%	19%	22%	
Adults with frequent poor mental health days	19%	16%	20%	
Low birthweight or premature births	10%	5%	9%	
Health Factors				16
Health Behaviors				6
Adult obesity	34%	28%	31%	
Adults who currently smoke	15%	13%	18%	
Adults who are not physically active	34%	26%	31%	
Adults eating <1 fruit/vegetable serving per day	10%	6%	8%	
Adults reporting heavy drinking	5%	4%	6%	
Adults reporting binge drinking	17%	14%	19%	
Population living in food desert	4%	0%	8%	
Teen births per 1,000 population	0.0	0.0	16.3	

Clinical Care				18
Population without health insurance	11%	1%	13%	
Adults with primary care doctor	79%	89%	81%	
Adults with routine checkup in past year	70%	75%	69%	
Preventable ED visits	6%	3%	6%	
Social & Economic Factors				17
Adults with high school diploma	84%	99%	86%	
Adults with bachelor's degree	21%	77%	37%	
Unemployment rate	13%	3%	10%	
Median household income	\$64,574	\$147,361	\$56,902	
Income inequality ²	.38	.38	.50	
Children in poverty	18%	2%	24%	
Single-parent households	13%	4%	10%	
Population without U.S. citizenship	10%	0%	11%	
Physical Environment				23
High risk for pediatric blood lead poisoning	Yes	No	N/A	
Average daily particulate matter ³ (µg/m ³)	10.9	5.8	11.9	
Vacant housing units	6%	4%	10%	
Substandard housing units	39%	19%	41%	
Commute to work over 1 hour	20%	8%	14%	

1. Chronic Obstructive Pulmonary Disease

2. Gini Index: value of zero indicates perfect equality of income and value of one indicates perfect inequality

3. Not to exceed 35 µg/m³ per the Environmental Protection Agency daily standard

21. Zip Code 60458 (Justice)

	Zip Code 60458	Top Performer	Cook County	Rank (of 27)
Overall Rank				21
Health Outcomes				18
Chronic Conditions				8
Adults with asthma	8%	6%	8%	
Adults with COPD ¹	6%	4%	6%	
Adults with diabetes	10%	10%	12%	
Adults who have had a stroke	3%	2%	3%	
Adults with high blood pressure	31%	26%	34%	
Quality of Life				18
Adults with fair or poor overall health status	17%	13%	18%	
Adults with frequent poor physical health days	21%	19%	22%	
Adults with frequent poor mental health days	22%	16%	20%	
Low birthweight or premature births	8%	5%	9%	
Health Factors				21
Health Behaviors				25
Adult obesity	32%	28%	31%	
Adults who currently smoke	20%	13%	18%	
Adults who are not physically active	29%	26%	31%	
Adults eating <1 fruit/vegetable serving per day	8%	6%	8%	
Adults reporting heavy drinking	6%	4%	6%	
Adults reporting binge drinking	21%	14%	19%	
Population living in food desert	45%	0%	8%	
Teen births per 1,000 population	0.0	0.0	16.3	

Clinical Care				21
Population without health insurance	18%	1%	13%	
Adults with primary care doctor	81%	89%	81%	
Adults with routine checkup in past year	67%	75%	69%	
Preventable ED visits	5%	3%	6%	
Social & Economic Factors				18
Adults with high school diploma	82%	99%	86%	
Adults with bachelor's degree	14%	77%	37%	
Unemployment rate	11%	3%	10%	
Median household income	\$48,700	\$147,361	\$56,902	
Income inequality ²	.43	.38	.50	
Children in poverty	23%	2%	24%	
Single-parent households	14%	4%	10%	
Population without U.S. citizenship	12%	0%	11%	
Physical Environment				8
High risk for pediatric blood lead poisoning	No	No	N/A	
Average daily particulate matter ³ (µg/m ³)	7.7	5.8	11.9	
Vacant housing units	13%	4%	10%	
Substandard housing units	45%	19%	41%	
Commute to work over 1 hour	15%	8%	14%	

1. Chronic Obstructive Pulmonary Disease

2. Gini Index: value of zero indicates perfect equality of income and value of one indicates perfect inequality

3. Not to exceed 35 µg/m³ per the Environmental Protection Agency daily standard

22. Zip Code 60632 (Chicago – Elsdon)

	Zip Code 60632	Top Performer	Cook County	Rank (of 27)
Overall Rank				22
Health Outcomes				5
Chronic Conditions				3
Adults with asthma	6%	6%	8%	
Adults with COPD ¹	4%	4%	6%	
Adults with diabetes	12%	10%	12%	
Adults who have had a stroke	2%	2%	3%	
Adults with high blood pressure	29%	26%	34%	
Quality of Life				21
Adults with fair or poor overall health status	21%	13%	18%	
Adults with frequent poor physical health days	22%	19%	22%	
Adults with frequent poor mental health days	21%	16%	20%	
Low birthweight or premature births	8%	5%	9%	
Health Factors				24
Health Behaviors				24
Adult obesity	31%	28%	31%	
Adults who currently smoke	18%	13%	18%	
Adults who are not physically active	37%	26%	31%	
Adults eating <1 fruit/vegetable serving per day	9%	6%	8%	
Adults reporting heavy drinking	5%	4%	6%	
Adults reporting binge drinking	20%	14%	19%	
Population living in food desert	0%	0%	8%	
Teen births per 1,000 population	38.8	0.0	16.3	

Clinical Care				26
Population without health insurance	25%	1%	13%	
Adults with primary care doctor	70%	89%	81%	
Adults with routine checkup in past year	62%	75%	69%	
Preventable ED visits	5%	3%	6%	
Social & Economic Factors				24
Adults with high school diploma	60%	99%	86%	
Adults with bachelor's degree	9%	77%	37%	
Unemployment rate	12%	3%	10%	
Median household income	\$40,829	\$147,361	\$56,902	
Income inequality ²	.42	.38	.50	
Children in poverty	33%	2%	24%	
Single-parent households	14%	4%	10%	
Population without U.S. citizenship	29%	0%	11%	
Physical Environment				24
High risk for pediatric blood lead poisoning	Yes	No	N/A	
Average daily particulate matter ³ ($\mu\text{g}/\text{m}^3$)	9.6	5.8	11.9	
Vacant housing units	11%	4%	10%	
Substandard housing units	54%	19%	41%	
Commute to work over 1 hour	17%	8%	14%	

1. Chronic Obstructive Pulmonary Disease

2. Gini Index: value of zero indicates perfect equality of income and value of one indicates perfect inequality

3. Not to exceed $35 \mu\text{g}/\text{m}^3$ per the Environmental Protection Agency daily standard

23. Zip Code 60629 (Chicago – Chicago Lawn)

	Zip Code 60629	Top Performer	Cook County	Rank (of 27)
Overall Rank				23
Health Outcomes				21
Chronic Conditions				7
Adults with asthma	7%	6%	8%	
Adults with COPD ¹	5%	4%	6%	
Adults with diabetes	12%	10%	12%	
Adults who have had a stroke	3%	2%	3%	
Adults with high blood pressure	32%	26%	34%	
Quality of Life				23
Adults with fair or poor overall health status	21%	13%	18%	
Adults with frequent poor physical health days	23%	19%	22%	
Adults with frequent poor mental health days	21%	16%	20%	
Low birthweight or premature births	8%	5%	9%	
Health Factors				25
Health Behaviors				22
Adult obesity	33%	28%	31%	
Adults who currently smoke	18%	13%	18%	
Adults who are not physically active	36%	26%	31%	
Adults eating <1 fruit/vegetable serving per day	10%	6%	8%	
Adults reporting heavy drinking	5%	4%	6%	
Adults reporting binge drinking	19%	14%	19%	
Population living in food desert	0%	0%	8%	
Teen births per 1,000 population	23.3	0.0	16.3	

Clinical Care				25
Population without health insurance	20%	1%	13%	
Adults with primary care doctor	73%	89%	81%	
Adults with routine checkup in past year	65%	75%	69%	
Preventable ED visits	6%	3%	6%	
Social & Economic Factors				25
Adults with high school diploma	68%	99%	86%	
Adults with bachelor's degree	9%	77%	37%	
Unemployment rate	17%	3%	10%	
Median household income	\$41,471	\$147,361	\$56,902	
Income inequality ²	.43	.38	.50	
Children in poverty	31%	2%	24%	
Single-parent households	16%	4%	10%	
Population without U.S. citizenship	21%	0%	11%	
Physical Environment				25
High risk for pediatric blood lead poisoning	Yes	No	N/A	
Average daily particulate matter ³ (µg/m ³)	11.2	5.8	11.9	
Vacant housing units	11%	4%	10%	
Substandard housing units	52%	19%	41%	
Commute to work over 1 hour	19%	8%	14%	

1. Chronic Obstructive Pulmonary Disease

2. Gini Index: value of zero indicates perfect equality of income and value of one indicates perfect inequality

3. Not to exceed 35 µg/m³ per the Environmental Protection Agency daily standard

24. Zip Code 60155 (Broadview)

	Zip Code 60155	Top Performer	Cook County	Rank (of 27)
Overall Rank				24
Health Outcomes				25
Chronic Conditions				25
Adults with asthma	8%	6%	8%	
Adults with COPD ¹	6%	4%	6%	
Adults with diabetes	16%	10%	12%	
Adults who have had a stroke	4%	2%	3%	
Adults with high blood pressure	43%	26%	34%	
Quality of Life				24
Adults with fair or poor overall health status	20%	13%	18%	
Adults with frequent poor physical health days	23%	19%	22%	
Adults with frequent poor mental health days	20%	16%	20%	
Low birthweight or premature births	12%	5%	9%	
Health Factors				19
Health Behaviors				14
Adult obesity	36%	28%	31%	
Adults who currently smoke	17%	13%	18%	
Adults who are not physically active	33%	26%	31%	
Adults eating <1 fruit/vegetable serving per day	9%	6%	8%	
Adults reporting heavy drinking	5%	4%	6%	
Adults reporting binge drinking	15%	14%	19%	
Population living in food desert	0%	0%	8%	
Teen births per 1,000 population	0.0	0.0	16.3	

Clinical Care				11
Population without health insurance	13%	1%	13%	
Adults with primary care doctor	85%	89%	81%	
Adults with routine checkup in past year	75%	75%	69%	
Preventable ED visits	6%	3%	6%	
Social & Economic Factors				21
Adults with high school diploma	89%	99%	86%	
Adults with bachelor's degree	20%	77%	37%	
Unemployment rate	16%	3%	10%	
Median household income	\$50,332	\$147,361	\$56,902	
Income inequality ²	.46	.38	.50	
Children in poverty	34%	2%	24%	
Single-parent households	13%	4%	10%	
Population without U.S. citizenship	1%	0%	11%	
Physical Environment				9
High risk for pediatric blood lead poisoning	No	No	N/A	
Average daily particulate matter ³ ($\mu\text{g}/\text{m}^3$)	9.4	5.8	11.9	
Vacant housing units	7%	4%	10%	
Substandard housing units	39%	19%	41%	
Commute to work over 1 hour	15%	8%	14%	

1. Chronic Obstructive Pulmonary Disease

2. Gini Index: value of zero indicates perfect equality of income and value of one indicates perfect inequality

3. Not to exceed $35 \mu\text{g}/\text{m}^3$ per the Environmental Protection Agency daily standard

25. Zip Code 60153 (Maywood)

	Zip Code 60153	Top Performer	Cook County	Rank (of 27)
Overall Rank				25
Health Outcomes				26
Chronic Conditions				26
Adults with asthma	9%	6%	8%	
Adults with COPD ¹	7%	4%	6%	
Adults with diabetes	17%	10%	12%	
Adults who have had a stroke	4%	2%	3%	
Adults with high blood pressure	45%	26%	34%	
Quality of Life				25
Adults with fair or poor overall health status	23%	13%	18%	
Adults with frequent poor physical health days	25%	19%	22%	
Adults with frequent poor mental health days	21%	16%	20%	
Low birthweight or premature births	12%	5%	9%	
Health Factors				23
Health Behaviors				23
Adult obesity	38%	28%	31%	
Adults who currently smoke	18%	13%	18%	
Adults who are not physically active	35%	26%	31%	
Adults eating <1 fruit/vegetable serving per day	10%	6%	8%	
Adults reporting heavy drinking	4%	4%	6%	
Adults reporting binge drinking	14%	14%	19%	
Population living in food desert	0%	0%	8%	
Teen births per 1,000 population	57.5	0.0	16.3	

Clinical Care				15
Population without health insurance	16%	1%	13%	
Adults with primary care doctor	82%	89%	81%	
Adults with routine checkup in past year	74%	75%	69%	
Preventable ED visits	6%	3%	6%	
Social & Economic Factors				23
Adults with high school diploma	81%	99%	86%	
Adults with bachelor's degree	13%	77%	37%	
Unemployment rate	17%	3%	10%	
Median household income	\$44,126	\$147,361	\$56,902	
Income inequality ²	.44	.38	.50	
Children in poverty	33%	2%	24%	
Single-parent households	16%	4%	10%	
Population without U.S. citizenship	8%	0%	11%	
Physical Environment				22
High risk for pediatric blood lead poisoning	Yes	No	N/A	
Average daily particulate matter ³ (µg/m ³)	10.4	5.8	11.9	
Vacant housing units	17%	4%	10%	
Substandard housing units	50%	19%	41%	
Commute to work over 1 hour	13%	8%	14%	

1. Chronic Obstructive Pulmonary Disease

2. Gini Index: value of zero indicates perfect equality of income and value of one indicates perfect inequality

3. Not to exceed 35 µg/m³ per the Environmental Protection Agency daily standard

26. Zip Code 60623 (Chicago – Lawndale)

	Zip Code 60623	Top Performer	Cook County	Rank (of 27)
Overall Rank				26
Health Outcomes				24
Chronic Conditions				23
Adults with asthma	8%	6%	8%	
Adults with COPD ¹	6%	4%	6%	
Adults with diabetes	15%	10%	12%	
Adults who have had a stroke	4%	2%	3%	
Adults with high blood pressure	36%	26%	34%	
Quality of Life				26
Adults with fair or poor overall health status	27%	13%	18%	
Adults with frequent poor physical health days	27%	19%	22%	
Adults with frequent poor mental health days	24%	16%	20%	
Low birthweight or premature births	10%	5%	9%	
Health Factors				27
Health Behaviors				27
Adult obesity	37%	28%	31%	
Adults who currently smoke	19%	13%	18%	
Adults who are not physically active	39%	26%	31%	
Adults eating <1 fruit/vegetable serving per day	12%	6%	8%	
Adults reporting heavy drinking	5%	4%	6%	
Adults reporting binge drinking	19%	14%	19%	
Population living in food desert	0%	0%	8%	
Teen births per 1,000 population	48.6	0.0	16.3	

Clinical Care				27
Population without health insurance	25%	1%	13%	
Adults with primary care doctor	70%	89%	81%	
Adults with routine checkup in past year	65%	75%	69%	
Preventable ED visits	7%	3%	6%	
Social & Economic Factors				26
Adults with high school diploma	57%	99%	86%	
Adults with bachelor's degree	8%	77%	37%	
Unemployment rate	13%	3%	10%	
Median household income	\$30,048	\$147,361	\$56,902	
Income inequality ²	.45	.38	.50	
Children in poverty	52%	2%	24%	
Single-parent households	22%	4%	10%	
Population without U.S. citizenship	21%	0%	11%	
Physical Environment				26
High risk for pediatric blood lead poisoning	Yes	No	N/A	
Average daily particulate matter ³ ($\mu\text{g}/\text{m}^3$)	11.5	5.8	11.9	
Vacant housing units	19%	4%	10%	
Substandard housing units	61%	19%	41%	
Commute to work over 1 hour	19%	8%	14%	

1. Chronic Obstructive Pulmonary Disease

2. Gini Index: value of zero indicates perfect equality of income and value of one indicates perfect inequality

3. Not to exceed $35 \mu\text{g}/\text{m}^3$ per the Environmental Protection Agency daily standard

27. Zip Code 60644 (Chicago – Austin)

	Zip Code 60644	Top Performer	Cook County	Rank (of 27)
Overall Rank				27
Health Outcomes				27
Chronic Conditions				27
Adults with asthma	10%	6%	8%	
Adults with COPD ¹	8%	4%	6%	
Adults with diabetes	17%	10%	12%	
Adults who have had a stroke	5%	2%	3%	
Adults with high blood pressure	47%	26%	34%	
Quality of Life				27
Adults with fair or poor overall health status	27%	13%	18%	
Adults with frequent poor physical health days	29%	19%	22%	
Adults with frequent poor mental health days	25%	16%	20%	
Low birthweight or premature births	12%	5%	9%	
Health Factors				26
Health Behaviors				26
Adult obesity	41%	28%	31%	
Adults who currently smoke	19%	13%	18%	
Adults who are not physically active	39%	26%	31%	
Adults eating <1 fruit/vegetable serving per day	16%	6%	8%	
Adults reporting heavy drinking	4%	4%	6%	
Adults reporting binge drinking	15%	14%	19%	
Population living in food desert	4%	0%	8%	
Teen births per 1,000 population	27.0	0.0	16.3	

Clinical Care				22
Population without health insurance	18%	1%	13%	
Adults with primary care doctor	76%	89%	81%	
Adults with routine checkup in past year	72%	75%	69%	
Preventable ED visits	7%	3%	6%	
Social & Economic Factors				27
Adults with high school diploma	76%	99%	86%	
Adults with bachelor's degree	11%	77%	37%	
Unemployment rate	19%	3%	10%	
Median household income	\$26,892	\$147,361	\$56,902	
Income inequality ²	.50	.38	.50	
Children in poverty	45%	2%	24%	
Single-parent households	23%	4%	10%	
Population without U.S. citizenship	2%	0%	11%	
Physical Environment				27
High risk for pediatric blood lead poisoning	Yes	No	N/A	
Average daily particulate matter ³ ($\mu\text{g}/\text{m}^3$)	12.1	5.8	11.9	
Vacant housing units	14%	4%	10%	
Substandard housing units	57%	19%	41%	
Commute to work over 1 hour	22%	8%	14%	

1. Chronic Obstructive Pulmonary Disease

2. Gini Index: value of zero indicates perfect equality of income and value of one indicates perfect inequality

3. Not to exceed $35 \mu\text{g}/\text{m}^3$ per the Environmental Protection Agency daily standard



Appendix



Zip Code Health Rankings Methodology

We adapted the methodology of the national County Health Rankings to create the *HCF Zip Code Health Rankings*. The County Health Rankings are constructed from statistical measures of Health Outcomes (length and quality of life) and Health Factors (determinants of health) such as smoking, obesity, access to healthy foods, teen births, income inequality, and air and water quality.

The County Health Rankings research team developed the weighting and ranking system to be consistent with scholarly research on the impact of various factors on health outcomes and pragmatic in the selection of factors that can be modified through community action. To design their approach, the researchers carefully considered the methodology and indicators of America's Health Rankings,¹ selected reliable indicators available at the county level nationwide, and collected feedback from a national panel of technical experts. The methodology is further described in a working paper,² publications,³⁻⁸ and the details of calculating scores and ranks available on the County Health Rankings & Roadmaps website.⁹

We used the majority of the County Health Rankings measures for the *HCF Zip Code Health Rankings*, with slight modifications (see list of measures in the table below). We added important urban health variables (e.g., pediatric blood lead poisoning and vacant housing units), for which reliable data are available for each zip code within the HCF service area. We collected zip code tabulation area (ZCTA)-level data from state and national data sources (described in the Data Sources section and identified in the table below). Using County Health Rankings weighting and ranking methods, we rated the health of the ZCTAs and computed a ranking for each ZCTA. The purpose of the rankings is to increase awareness of the factors that influence health and demonstrate how health may vary among the ZCTAs.

We ranked each ZCTA relative to the health of the other ZCTAs within the HCF service area. The nine scores that are calculated and ranked are:

1. Overall Rank
2. Overall Health Outcomes
3. Health Outcomes: Chronic Conditions
4. Health Outcomes: Quality of Life
5. Overall Health Factors
6. Health Factors: Health Behaviors
7. Health Factors: Clinical Care
8. Health Factors: Social & Economic Factors
9. Health Factors: Physical Environment

Data Sources

The *HCF Zip Code Health Rankings* data sources include state and national agencies such as the Illinois Department of Public Health and the U.S. Census Bureau. Other data sources include public and private sources that use data from national hospital databases, national surveys, and surveillance systems such as the Behavioral Risk Factor Surveillance System. These sources include:

- U.S. Census Bureau American Community Survey¹⁰
- Illinois Hospital Association COMPdata Informatics¹¹
- Policy Map, a data warehouse and GIS solutions provider¹²
- Community Commons, an award-winning mapping and data visualization center¹³

Calculating the Rankings

The statistical data for the *HCF Zip Code Health Rankings* measures are commonly reported as percentages and ratios. To uniformly calculate the rankings, we standardized each health measure using a z-transformation (i.e., normalized):

$$z = \frac{(\text{ZCTA Value}) - (\text{Average of ZCTAs in Service Area})}{(\text{Standard Deviation of ZCTAs in Service Area})}$$

We used reverse coding (i.e., multiplied the z-score by -1) when necessary to ensure lower scores always indicated better health. We computed composite scores by summing the weighted z-scores, such that:

$$\text{Composite} = \sum w_i z_i$$

The lowest composite score is ranked #1 for the ZCTA with the best overall health and the highest composite score is ranked #27 for the ZCTA with the worst overall health within the HCF service area.

References

1. America's Health Rankings. United Health Foundation. 2018. Available at: <https://www.americashealthrankings.org/>
2. Booske BC, Athena JK, Kindig DA, et al. County Health Rankings working paper: Different perspectives for assigning weights to determinants of health. University of Wisconsin Population Health Institute. February 2010.
3. Park H, Roubal AM, Jovaag A, et al. Relative contributions of a set of health factors to selected health outcomes. *Am J Prev Med.* 2015;49(6):961-9.
4. Hood CM, Gennuso KP, Swain GR, et al. County Health Rankings: Relationships between determinant factors and health outcomes. *Am J Prev Med.* 2016;50(2):129-135.
5. Athens JK, Remington PL, Gangnon RE. Improving the rank precision of population health measures for small areas with longitudinal and joint outcome models. *PLoS One.* 2015;10(6): e0130027.
6. Roubal AM, Jovaag A, Park H, et al. Development of a nationally representative built environment measure of access to exercise opportunities. *Prev Chronic Dis.* 2015;12:E09. doi: 10.5888/pcd12.140378.
7. Athens JK, Catlin BB, Remington PL, et al. Using empirical Bayes methods to rank counties on population health measures. *Prev Chronic Dis.* 2013;10:E129. doi: 10.5888/PCD10.13.
8. Arndt S, Acion L, Caspers K, et al. (2013). How reliable are county and regional health rankings? *Prev Sci.* 2013;14(5):497-502.
9. University of Wisconsin Population Health Institute. County Health Rankings & Roadmaps 2017. Available at: <http://www.countyhealthrankings.org>
10. United States Census Bureau. American Community Survey 5-year estimates (2012-2016). Available at: <https://factfinder.census.gov/faces/nav/jsf/pages/index.xhtml>
11. Illinois Health and Hospital Association. COMPdata Informatics. Available at: <https://www.compdatainfo.com/Home.aspx>
12. PolicyMap. Available at: <https://www.policymap.com/>
13. Community Commons. Institute for People, Place, & Possibility (IP3) and The Center for Applied Research and Engagement Systems (CARES) University of Missouri. Available at: <https://www.communitycommons.org/>

Measures and Data Sources for the HCF Zip Code Health Rankings

Indicator	Description	Source	Year
Adults with asthma	Estimated percent of adults reporting current asthma	Policy Map	2013
Adults with COPD	Estimated percent of adults ever diagnosed with chronic obstructive pulmonary disease, emphysema, or chronic bronchitis	Policy Map	2013
Adults with diabetes	Estimated percent of adults ever diagnosed with diabetes	Policy Map	2013
Adults who have had a stroke	Estimated percent of adults ever diagnosed with a stroke	Policy Map	2013
Adults with high blood pressure	Estimated percent of adults ever diagnosed with high blood pressure (hypertension)	Policy Map	2013
Adults with fair or poor overall health status	Estimated percent of adults reporting fair or poor health in the past 30 days	Policy Map	2013
Adults with frequent poor physical health days	Estimated percent of adults reporting 7 or more days of poor physical health in the past 30 days	Policy Map	2013
Adults with frequent poor mental health days	Estimated percent of adults reporting 7 or more days of poor mental health in the past 30 days	Policy Map	2013
Low birthweight or premature births	Percent of low birthweight or premature birth outcomes (Diagnosis Related Group codes 790-792) of all live births (Medical Diagnostic Category 15)	COMPdata Informatics	2014-2017
Adult obesity	Estimated percent of adults who are obese based on self-reported weight/height (a body mass index of 30 or greater)	Policy Map	2013
Adults who currently smoke	Estimated percent of adults who report smoking cigarettes regularly	Policy Map	2013
Adults who are not physically active	Estimated percent of adults reporting to be physically inactive in the past 30 days	Policy Map	2013
Adults eating <1 fruit/vegetable serving per day	Estimated percent of adults reporting to eat less than 1 serving of fruit/vegetables per day	Policy Map	2013
Adults reporting heavy drinking	Estimated percent of adults reporting heavy drinking in the past 30 days (defined as having 2+ drinks per day for men or 1+ drink per day for women)	Policy Map	2013
Adults reporting binge drinking	Estimated percent of adults reporting binge drinking in the past 30 days (defined as having 5+ drinks for men or 4+ drinks for women in one occasion)	Policy Map	2013
Population living in food desert	Percent of the population living in an area designated as a food desert (defined by both low-income (poverty rate is 20% or greater) and low-access (at least 500 people or 33% of the population is >1 mile from the nearest grocery store for an urban area or 10 miles for a rural area))	Community Commons	2015
Teen births per 1,000 population	Number of women aged 15-19 years with births in the past 12 months per 1,000 female population	American Community Survey	2012-2016
Population without health insurance	Percent of the civilian noninstitutionalized population with no health insurance coverage	American Community Survey	2012-2016
Adults with primary care doctor	Estimated percent of adults reporting to have a personal doctor or health care provider	Policy Map	2013
Adults with routine checkup in past year	Estimated percent of adults reporting that they received a physical checkup in the past year	Policy Map	2013

Indicator	Description	Source	Year
Preventable ED visits	Percent of emergency department visits that was required based on emergent nature of the condition but potentially preventable if timely and effective ambulatory care had been received previously (e.g., asthma flare-ups, diabetes, congestive heart failure)	COMPdata Informatics	2014-2017
Adults with high school diploma	Percent of the population aged 25 years and over that are a high school graduate or higher	American Community Survey	2012-2016
Adults with bachelor's degree	Percent of the population aged 25 years and over that have a bachelor's degree or higher	American Community Survey	2012-2016
Unemployment rate	Percent of the population aged 16 years and over that are in the civilian labor force and are unemployed	American Community Survey	2012-2016
Median household income	Yearly median income per household within a given population (2016 dollars)	American Community Survey	2012-2016
Income inequality (Gini Index)	Estimated inequality of household income according to the Gini Index, which measures income distribution among residents of a specified geography. A value of zero indicates perfect equality of income (all households having equal income) and a value of 1 indicates perfect inequality (one household having all of the income).	Policy Map	2012-2016
Children in poverty	Percent of all children under 18 years of age that have been living below the poverty level in the past 12 months	American Community Survey	2012-2016
Single-parent households	Percent of households with a male householder (no wife present) or a female householder (no husband present) with own children under 18 years of age	U.S Census	2010
Population without U.S. citizenship	Percent of a population that is not a U.S. citizen	American Community Survey	2012-2016
High risk for pediatric blood lead poisoning	Zip codes where children aged 6 years or younger are considered to be at high risk for lead exposure based on family economic status (200 percent poverty and below) and age of the housing unit	Illinois Department of Public Health	2015
Average daily particulate matter	Average daily density of fine particulate matter in micrograms per cubic meter (not to exceed 35 $\mu\text{g}/\text{m}^3$ per the Environmental Protection Agency daily standard)	Community Commons	2012
Vacant housing units	Percent of vacant housing units out of total housing units	American Community Survey	2012-2016
Substandard housing units	Percent of owner- and renter-occupied housing units having at least 1 of the following conditions: 1) lacking complete plumbing facilities; 2) lacking complete kitchen facilities; 3) with 1.01 or more occupants per room; 4) selected monthly owner costs as a percentage of household income >30%; or 5) gross rent as a percentage of household income >30%	Community Commons	2011-2015
Commute to work over 1 hour	Estimated percent of workers aged 16 years or older who did not work at home with a commute to work of more than 1 hour	Policy Map	2012-2016

Demographic Characteristics of Zip Code 60130 (Forest Park), 2000-2016

	2000 ¹	2007-2011 ²	2012-2016 ²
Total population	15,688	14,245	14,137
Race and Ethnicity			
Hispanic or Latino (any race) (%)	8	10	9
Non-Hispanic white alone (%)	52	48	48
Non-Hispanic black alone (%)	31	35	31
Foreign born population (%)	15	12	14
Socioeconomic Characteristics			
High school graduates (%) ³	88	91	94
Median household income (\$) ⁴	63,576	55,163	51,552
Unemployment rate (%) ⁵	4	10	10
Owner occupied housing units (%)	45	48	53
Age and Language			
Median age (years)	36	39	39
Population 5 years and over that speaks ⁶ :			
Only English at home (%)	81	85	81
Spanish at home (%)	8	6	6
Other Indo-European languages at home (%)	6	5	7
Asian and Pacific Island languages at home (%)	4	4	5
Other languages at home (%)	1	0	1

Demographic Characteristics of Zip Code 60153 (Maywood), 2000-2016

	2000 ¹	2007-2011 ²	2012-2016 ²
Total population	26,863	24,302	24,029
Race and Ethnicity			
Hispanic or Latino (any race) (%)	11	20	23
Non-Hispanic white alone (%)	6	4	4
Non-Hispanic black alone (%)	82	75	71
Foreign born population (%)	7	9	12
Socioeconomic Characteristics			
High school graduates (%) ³	75	78	81
Median household income (\$) ⁴	60,501	47,987	44,126
Unemployment rate (%) ⁵	12	17	17
Owner occupied housing units (%)	63	65	59
Age and Language			
Median age (years)	31	35	34
Population 5 years and over that speaks ⁶ :			
Only English at home (%)	87	81	76
Spanish at home (%)	12	18	22
Other Indo-European languages at home (%)	1	1	1
Asian and Pacific Island languages at home (%)	0	0	0
Other languages at home (%)	0	0	1

1. U.S. Census
2. American Community Survey
3. Among those age 25 years and over
4. 2016 inflation-adjusted dollars
5. Among civilian labor force age 16 years and over
6. Percentages may not add to 100 due to rounding

Demographic Characteristics of Zip Code 60154 (Westchester), 2000-2016

	2000 ¹	2007-2011 ²	2012-2016 ²
Total population	16,714	16,637	16,778
Race and Ethnicity			
Hispanic or Latino (any race) (%)	6	14	19
Non-Hispanic white alone (%)	83	64	57
Non-Hispanic black alone (%)	7	17	17
Foreign born population (%)	10	15	14
Socioeconomic Characteristics			
High school graduates (%) ³	89	89	93
Median household income (\$) ⁴	85,202	77,845	72,039
Unemployment rate (%) ⁵	4	7	6
Owner occupied housing units (%)	94	92	89
Age and Language			
Median age (years)	45	46	47
Population 5 years and over that speaks ⁶ :			
Only English at home (%)	85	76	75
Spanish at home (%)	5	13	15
Other Indo-European languages at home (%)	8	6	6
Asian and Pacific Island languages at home (%)	3	4	3
Other languages at home (%)	0	0	1

Demographic Characteristics of Zip Code 60155 (Broadview), 2000-2016

	2000 ¹	2007-2011 ²	2012-2016 ²
Total population	8,254	7,928	7,915
Race and Ethnicity			
Hispanic or Latino (any race) (%)	4	9	4
Non-Hispanic white alone (%)	20	15	17
Non-Hispanic black alone (%)	73	73	76
Foreign born population (%)	4	8	2
Socioeconomic Characteristics			
High school graduates (%) ³	83	87	89
Median household income (\$) ⁴	68,799	53,514	50,332
Unemployment rate (%) ⁵	8	16	16
Owner occupied housing units (%)	70	64	67
Age and Language			
Median age (years)	37	40	48
Population 5 years and over that speaks ⁶ :			
Only English at home (%)	93	90	95
Spanish at home (%)	4	7	3
Other Indo-European languages at home (%)	2	1	1
Asian and Pacific Island languages at home (%)	1	2	1
Other languages at home (%)	0	1	1

1. U.S. Census

2. American Community Survey

3. Among those age 25 years and over

4. 2016 inflation-adjusted dollars

5. Among civilian labor force age 16 years and over

6. Percentages may not add to 100 due to rounding

Demographic Characteristics of Zip Code 60301 (Oak Park), 2000-2016

	2000 ¹	2007-2011 ²	2012-2016 ²
Total population	2,158	2,357	2,329
Race and Ethnicity			
Hispanic or Latino (any race) (%)	5	13	13
Non-Hispanic white alone (%)	64	64	51
Non-Hispanic black alone (%)	19	15	24
Foreign born population (%)	20	19	15
Socioeconomic Characteristics			
High school graduates (%) ³	96	96	93
Median household income (\$) ⁴	87,067	55,023	70,040
Unemployment rate (%) ⁵	3	5	9
Owner occupied housing units (%)	32	36	27
Age and Language			
Median age (years)	37	41	45
Population 5 years and over that speaks ⁶ :			
Only English at home (%)	81	76	79
Spanish at home (%)	3	10	12
Other Indo-European languages at home (%)	12	7	2
Asian and Pacific Island languages at home (%)	3	5	7
Other languages at home (%)	1	1	0

Demographic Characteristics of Zip Code 60302 (Oak Park), 2000-2016

	2000 ¹	2007-2011 ²	2012-2016 ²
Total population	32,527	31,907	32,258
Race and Ethnicity			
Hispanic or Latino (any race) (%)	4	6	7
Non-Hispanic white alone (%)	67	66	62
Non-Hispanic black alone (%)	23	21	22
Foreign born population (%)	10	10	10
Socioeconomic Characteristics			
High school graduates (%) ³	95	96	97
Median household income (\$) ⁴	82,358	76,005	79,167
Unemployment rate (%) ⁵	3	6	8
Owner occupied housing units (%)	54	62	57
Age and Language			
Median age (years)	37	39	40
Population 5 years and over that speaks ⁶ :			
Only English at home (%)	88	86	88
Spanish at home (%)	3	5	5
Other Indo-European languages at home (%)	5	5	4
Asian and Pacific Island languages at home (%)	2	3	2
Other languages at home (%)	1	1	1

1. U.S. Census

2. American Community Survey

3. Among those age 25 years and over

4. 2016 inflation-adjusted dollars

5. Among civilian labor force age 16 years and over

6. Percentages may not add to 100 due to rounding

Demographic Characteristics of Zip Code 60304 (Oak Park), 2000-2016

	2000 ¹	2007-2011 ²	2012-2016 ²
Total population	17,839	17,368	17,402
Race and Ethnicity			
Hispanic or Latino (any race) (%)	5	6	8
Non-Hispanic white alone (%)	66	67	65
Non-Hispanic black alone (%)	22	19	18
Foreign born population (%)	9	9	10
Socioeconomic Characteristics			
High school graduates (%) ³	93	97	98
Median household income (\$) ⁴	89,349	93,198	93,903
Unemployment rate (%) ⁵	4	8	5
Owner occupied housing units (%)	65	72	69
Age and Language			
Median age (years)	34	37	38
Population 5 years and over that speaks ⁶ :			
Only English at home (%)	86	89	87
Spanish at home (%)	6	3	5
Other Indo-European languages at home (%)	5	4	5
Asian and Pacific Island languages at home (%)	3	3	3
Other languages at home (%)	1	1	1

Demographic Characteristics of Zip Code 60305 (River Forest), 2000-2016

	2000 ¹	2007-2011 ²	2012-2016 ²
Total population	11,635	11,164	11,217
Race and Ethnicity			
Hispanic or Latino (any race) (%)	4	4	6
Non-Hispanic white alone (%)	87	85	78
Non-Hispanic black alone (%)	5	6	6
Foreign born population (%)	8	9	9
Socioeconomic Characteristics			
High school graduates (%) ³	97	97	97
Median household income (\$) ⁴	128,706	131,069	103,622
Unemployment rate (%) ⁵	4	6	3
Owner occupied housing units (%)	87	92	87
Age and Language			
Median age (years)	39	41	41
Population 5 years and over that speaks ⁶ :			
Only English at home (%)	88	86	88
Spanish at home (%)	4	4	5
Other Indo-European languages at home (%)	5	7	5
Asian and Pacific Island languages at home (%)	2	3	2
Other languages at home (%)	1	1	1

1. U.S. Census

2. American Community Survey

3. Among those age 25 years and over

4. 2016 inflation-adjusted dollars

5. Among civilian labor force age 16 years and over

6. Percentages may not add to 100 due to rounding

Demographic Characteristics of Zip Code 60402 (Berwyn), 2000-2016

	2000 ¹	2007-2011 ²	2012-2016 ²
Total population	60,373	63,217	63,938
Race and Ethnicity			
Hispanic or Latino (any race) (%)	36	56	61
Non-Hispanic white alone (%)	59	36	29
Non-Hispanic black alone (%)	1	5	6
Foreign born population (%)	24	24	26
Socioeconomic Characteristics			
High school graduates (%) ³	75	77	79
Median household income (\$) ⁴	63,180	53,429	59,801
Unemployment rate (%) ⁵	6	11	9
Owner occupied housing units (%)	64	62	61
Age and Language			
Median age (years)	34	33	35
Population 5 years and over that speaks ⁶ :			
Only English at home (%)	60	46	43
Spanish at home (%)	29	48	51
Other Indo-European languages at home (%)	9	4	4
Asian and Pacific Island languages at home (%)	2	1	2
Other languages at home (%)	1	1	0

Demographic Characteristics of Zip Code 60455 (Bridgeview), 2000-2016

	2000 ¹	2007-2011 ²	2012-2016 ²
Total population	16,138	16,180	16,421
Race and Ethnicity			
Hispanic or Latino (any race) (%)	10	17	17
Non-Hispanic white alone (%)	82	74	73
Non-Hispanic black alone (%)	1	2	4
Foreign born population (%)	19	25	28
Socioeconomic Characteristics			
High school graduates (%) ³	72	77	80
Median household income (\$) ⁴	61,866	53,801	52,568
Unemployment rate (%) ⁵	4	10	11
Owner occupied housing units (%)	75	76	73
Age and Language			
Median age (years)	37	38	38
Population 5 years and over that speaks ⁶ :			
Only English at home (%)	70	54	52
Spanish at home (%)	6	14	13
Other Indo-European languages at home (%)	16	17	20
Asian and Pacific Island languages at home (%)	1	2	3
Other languages at home (%)	7	13	13

1. U.S. Census

2. American Community Survey

3. Among those age 25 years and over

4. 2016 inflation-adjusted dollars

5. Among civilian labor force age 16 years and over

6. Percentages may not add to 100 due to rounding

Demographic Characteristics of Zip Code 60457 (Hickory Hills), 2000-2016

	2000 ¹	2007-2011 ²	2012-2016 ²
Total population	14,110	14,002	13,858
Race and Ethnicity			
Hispanic or Latino (any race) (%)	8	12	13
Non-Hispanic white alone (%)	86	80	82
Non-Hispanic black alone (%)	1	2	4
Foreign born population (%)	18	30	25
Socioeconomic Characteristics			
High school graduates (%) ³	82	87	87
Median household income (\$) ⁴	80,408	63,197	61,708
Unemployment rate (%) ⁵	3	8	10
Owner occupied housing units (%)	76	74	74
Age and Language			
Median age (years)	37	36	39
Population 5 years and over that speaks ⁶ :			
Only English at home (%)	73	56	60
Spanish at home (%)	6	10	8
Other Indo-European languages at home (%)	14	26	24
Asian and Pacific Island languages at home (%)	2	2	1
Other languages at home (%)	5	8	7

Demographic Characteristics of Zip Code 60458 (Justice), 2000-2016

	2000 ¹	2007-2011 ²	2012-2016 ²
Total population	14,226	13,930	14,887
Race and Ethnicity			
Hispanic or Latino (any race) (%)	7	14	19
Non-Hispanic white alone (%)	70	65	59
Non-Hispanic black alone (%)	17	20	18
Foreign born population (%)	16	20	23
Socioeconomic Characteristics			
High school graduates (%) ³	79	85	82
Median household income (\$) ⁴	68,111	51,691	48,700
Unemployment rate (%) ⁵	5	10	11
Owner occupied housing units (%)	56	58	53
Age and Language			
Median age (years)	31	32	31
Population 5 years and over that speaks ⁶ :			
Only English at home (%)	75	66	58
Spanish at home (%)	4	9	12
Other Indo-European languages at home (%)	16	19	23
Asian and Pacific Island languages at home (%)	1	0	1
Other languages at home (%)	4	5	7

1. U.S. Census

2. American Community Survey

3. Among those age 25 years and over

4. 2016 inflation-adjusted dollars

5. Among civilian labor force age 16 years and over

6. Percentages may not add to 100 due to rounding

Demographic Characteristics of Zip Code 60459 (Burbank), 2000-2016

	2000 ¹	2007-2011 ²	2012-2016 ²
Total population	27,978	28,757	29,047
Race and Ethnicity			
Hispanic or Latino (any race) (%)	11	26	29
Non-Hispanic white alone (%)	84	70	66
Non-Hispanic black alone (%)	0	1	2
Foreign born population (%)	22	32	29
Socioeconomic Characteristics			
High school graduates (%) ³	74	74	80
Median household income (\$) ⁴	70,981	59,764	54,862
Unemployment rate (%) ⁵	6	11	9
Owner occupied housing units (%)	83	82	78
Age and Language			
Median age (years)	37	36	38
Population 5 years and over that speaks ⁶ :			
Only English at home (%)	67	47	50
Spanish at home (%)	8	20	21
Other Indo-European languages at home (%)	19	25	18
Asian and Pacific Island languages at home (%)	1	2	1
Other languages at home (%)	5	7	10

Demographic Characteristics of Zip Code 60501 (Summit), 2000-2016

	2000 ¹	2007-2011 ²	2012-2016 ²
Total population	11,175	11,577	11,990
Race and Ethnicity			
Hispanic or Latino (any race) (%)	46	67	66
Non-Hispanic white alone (%)	39	21	22
Non-Hispanic black alone (%)	11	8	10
Foreign born population (%)	33	36	34
Socioeconomic Characteristics			
High school graduates (%) ³	61	65	71
Median household income (\$) ⁴	56,311	51,545	48,014
Unemployment rate (%) ⁵	8	12	13
Owner occupied housing units (%)	55	56	53
Age and Language			
Median age (years)	30	29	31
Population 5 years and over that speaks ⁶ :			
Only English at home (%)	44	31	33
Spanish at home (%)	42	61	60
Other Indo-European languages at home (%)	11	7	7
Asian and Pacific Island languages at home (%)	2	1	0
Other languages at home (%)	2	0	1

1. U.S. Census

2. American Community Survey

3. Among those age 25 years and over

4. 2016 inflation-adjusted dollars

5. Among civilian labor force age 16 years and over

6. Percentages may not add to 100 due to rounding

Demographic Characteristics of Zip Code 60513 (Brookfield), 2000-2016

	2000 ¹	2007-2011 ²	2012-2016 ²
Total population	19,146	18,799	18,966
Race and Ethnicity			
Hispanic or Latino (any race) (%)	8	17	19
Non-Hispanic white alone (%)	89	79	74
Non-Hispanic black alone (%)	1	2	5
Foreign born population (%)	9	11	8
Socioeconomic Characteristics			
High school graduates (%) ³	88	93	94
Median household income (\$) ⁴	75,911	75,845	75,336
Unemployment rate (%) ⁵	4	9	5
Owner occupied housing units (%)	75	77	76
Age and Language			
Median age (years)	38	39	39
Population 5 years and over that speaks ⁶ :			
Only English at home (%)	86	79	82
Spanish at home (%)	6	12	11
Other Indo-European languages at home (%)	7	7	6
Asian and Pacific Island languages at home (%)	1	1	1
Other languages at home (%)	0	1	0

Demographic Characteristics of Zip Code 60525 (LaGrange), 2000-2016

	2000 ¹	2007-2011 ²	2012-2016 ²
Total population	32,475	31,182	31,395
Race and Ethnicity			
Hispanic or Latino (any race) (%)	7	14	14
Non-Hispanic white alone (%)	88	81	77
Non-Hispanic black alone (%)	4	3	5
Foreign born population (%)	10	12	12
Socioeconomic Characteristics			
High school graduates (%) ³	89	91	93
Median household income (\$) ⁴	90,665	77,590	79,145
Unemployment rate (%) ⁵	4	8	6
Owner occupied housing units (%)	81	82	78
Age and Language			
Median age (years)	41	42	42
Population 5 years and over that speaks ⁶ :			
Only English at home (%)	87	80	80
Spanish at home (%)	6	11	11
Other Indo-European languages at home (%)	7	8	8
Asian and Pacific Island languages at home (%)	1	1	1
Other languages at home (%)	0	0	0

1. U.S. Census

2. American Community Survey

3. Among those age 25 years and over

4. 2016 inflation-adjusted dollars

5. Among civilian labor force age 16 years and over

6. Percentages may not add to 100 due to rounding

Demographic Characteristics of Zip Code 60526 (LaGrange Park), 2000-2016

	2000 ¹	2007-2011 ²	2012-2016 ²
Total population	13,301	13,543	13,565
Race and Ethnicity			
Hispanic or Latino (any race) (%)	4	10	10
Non-Hispanic white alone (%)	91	82	86
Non-Hispanic black alone (%)	3	6	3
Foreign born population (%)	7	8	10
Socioeconomic Characteristics			
High school graduates (%) ³	92	94	96
Median household income (\$) ⁴	85,229	75,066	84,342
Unemployment rate (%) ⁵	3	5	6
Owner occupied housing units (%)	72	69	69
Age and Language			
Median age (years)	41	40	42
Population 5 years and over that speaks ⁶ :			
Only English at home (%)	90	83	83
Spanish at home (%)	3	8	7
Other Indo-European languages at home (%)	6	8	9
Asian and Pacific Island languages at home (%)	1	1	1
Other languages at home (%)	1	0	0

Demographic Characteristics of Zip Code 60534 (Lyons), 2000-2016

	2000 ¹	2007-2011 ²	2012-2016 ²
Total population	10,212	10,599	10,571
Race and Ethnicity			
Hispanic or Latino (any race) (%)	16	43	44
Non-Hispanic white alone (%)	79	48	47
Non-Hispanic black alone (%)	1	5	5
Foreign born population (%)	18	22	21
Socioeconomic Characteristics			
High school graduates (%) ³	79	83	86
Median household income (\$) ⁴	63,418	55,513	45,825
Unemployment rate (%) ⁵	8	9	6
Owner occupied housing units (%)	60	67	61
Age and Language			
Median age (years)	36	36	36
Population 5 years and over that speaks ⁶ :			
Only English at home (%)	74	53	56
Spanish at home (%)	13	36	31
Other Indo-European languages at home (%)	11	7	10
Asian and Pacific Island languages at home (%)	1	3	2
Other languages at home (%)	1	2	1

1. U.S. Census

2. American Community Survey

3. Among those age 25 years and over

4. 2016 inflation-adjusted dollars

5. Among civilian labor force age 16 years and over

6. Percentages may not add to 100 due to rounding

Demographic Characteristics of Zip Code 60546 (Riverside), 2000-2016

	2000 ¹	2007-2011 ²	2012-2016 ²
Total population	15,700	15,736	15,837
Race and Ethnicity			
Hispanic or Latino (any race) (%)	7	21	22
Non-Hispanic white alone (%)	89	72	71
Non-Hispanic black alone (%)	1	3	3
Foreign born population (%)	11	12	11
Socioeconomic Characteristics			
High school graduates (%) ³	88	92	95
Median household income (\$) ⁴	79,698	70,700	72,481
Unemployment rate (%) ⁵	3	8	8
Owner occupied housing units (%)	76	76	71
Age and Language			
Median age (years)	43	41	42
Population 5 years and over that speaks ⁶ :			
Only English at home (%)	82	76	74
Spanish at home (%)	4	15	17
Other Indo-European languages at home (%)	12	7	7
Asian and Pacific Island languages at home (%)	2	3	2
Other languages at home (%)	0	0	0

Demographic Characteristics of Zip Code 60558 (Western Springs), 2000-2016

	2000 ¹	2007-2011 ²	2012-2016 ²
Total population	12,539	12,747	13,133
Race and Ethnicity			
Hispanic or Latino (any race) (%)	2	4	4
Non-Hispanic white alone (%)	97	95	94
Non-Hispanic black alone (%)	0	0	0
Foreign born population (%)	4	4	4
Socioeconomic Characteristics			
High school graduates (%) ³	97	99	99
Median household income (\$) ⁴	142,433	145,197	147,361
Unemployment rate (%) ⁵	2	6	3
Owner occupied housing units (%)	95	96	96
Age and Language			
Median age (years)	40	42	43
Population 5 years and over that speaks ⁶ :			
Only English at home (%)	93	93	94
Spanish at home (%)	2	2	2
Other Indo-European languages at home (%)	5	4	4
Asian and Pacific Island languages at home (%)	1	1	1
Other languages at home (%)	0	0	0

1. U.S. Census
2. American Community Survey
3. Among those age 25 years and over
4. 2016 inflation-adjusted dollars
5. Among civilian labor force age 16 years and over
6. Percentages may not add to 100 due to rounding

Demographic Characteristics of Zip Code 60623 (Chicago - Lawndale), 2000-2016

	2000 ¹	2007-2011 ²	2012-2016 ²
Total population	108,144	85,764	88,137
Race and Ethnicity			
Hispanic or Latino (any race) (%)	63	64	65
Non-Hispanic white alone (%)	2	3	2
Non-Hispanic black alone (%)	35	33	32
Foreign born population (%)	37	34	30
Socioeconomic Characteristics			
High school graduates (%) ³	44	53	57
Median household income (\$) ⁴	40,656	32,672	30,048
Unemployment rate (%) ⁵	15	15	13
Owner occupied housing units (%)	33	34	34
Age and Language			
Median age (years)	25	27	29
Population 5 years and over that speaks ⁶ :			
Only English at home (%)	40	40	39
Spanish at home (%)	59	60	60
Other Indo-European languages at home (%)	1	0	0
Asian and Pacific Island languages at home (%)	0	0	0
Other languages at home (%)	0	0	0

Demographic Characteristics of Zip Code 60629 (Chicago - Chicago Lawn), 2000-2016

	2000 ¹	2007-2011 ²	2012-2016 ²
Total population	113,984	112,376	115,104
Race and Ethnicity			
Hispanic or Latino (any race) (%)	49	64	70
Non-Hispanic white alone (%)	23	10	8
Non-Hispanic black alone (%)	26	25	20
Foreign born population (%)	29	32	32
Socioeconomic Characteristics			
High school graduates (%) ³	63	64	68
Median household income (\$) ⁴	58,064	44,327	41,471
Unemployment rate (%) ⁵	12	13	17
Owner occupied housing units (%)	64	60	57
Age and Language			
Median age (years)	28	29	30
Population 5 years and over that speaks ⁶ :			
Only English at home (%)	47	39	34
Spanish at home (%)	44	58	64
Other Indo-European languages at home (%)	7	2	2
Asian and Pacific Island languages at home (%)	1	1	0
Other languages at home (%)	1	0	0

1. U.S. Census

2. American Community Survey

3. Among those age 25 years and over

4. 2016 inflation-adjusted dollars

5. Among civilian labor force age 16 years and over

6. Percentages may not add to 100 due to rounding

Demographic Characteristics of Zip Code 60632 (Chicago - Elsdon), 2000-2016

	2000 ¹	2007-2011 ²	2012-2016 ²
Total population	87,577	88,723	91,668
Race and Ethnicity			
Hispanic or Latino (any race) (%)	70	82	85
Non-Hispanic white alone (%)	25	12	9
Non-Hispanic black alone (%)	1	2	1
Foreign born population (%)	46	43	44
Socioeconomic Characteristics			
High school graduates (%) ³	50	57	60
Median household income (\$) ⁴	53,922	43,037	40,829
Unemployment rate (%) ⁵	10	15	12
Owner occupied housing units (%)	58	55	53
Age and Language			
Median age (years)	28	28	31
Population 5 years and over that speaks ⁶ :			
Only English at home (%)	26	18	15
Spanish at home (%)	62	75	77
Other Indo-European languages at home (%)	10	4	3
Asian and Pacific Island languages at home (%)	2	4	4
Other languages at home (%)	0	0	0

Demographic Characteristics of Zip Code 60638 (Bedford Park), 2000-2016

	2000 ¹	2007-2011 ²	2012-2016 ²
Total population	55,788	55,810	57,746
Race and Ethnicity			
Hispanic or Latino (any race) (%)	16	38	48
Non-Hispanic white alone (%)	75	56	48
Non-Hispanic black alone (%)	8	4	3
Foreign born population (%)	17	21	21
Socioeconomic Characteristics			
High school graduates (%) ³	74	82	83
Median household income (\$) ⁴	65,119	64,421	64,408
Unemployment rate (%) ⁵	6	10	10
Owner occupied housing units (%)	79	81	77
Age and Language			
Median age (years)	38	36	38
Population 5 years and over that speaks ⁶ :			
Only English at home (%)	71	60	56
Spanish at home (%)	10	26	32
Other Indo-European languages at home (%)	18	12	10
Asian and Pacific Island languages at home (%)	1	1	1
Other languages at home (%)	1	1	0

1. U.S. Census

2. American Community Survey

3. Among those age 25 years and over

4. 2016 inflation-adjusted dollars

5. Among civilian labor force age 16 years and over

6. Percentages may not add to 100 due to rounding

Demographic Characteristics of Zip Code 60644 (Chicago - Austin), 2000-2016

	2000 ¹	2007-2011 ²	2012-2016 ²
Total population	59,059	47,127	49,645
Race and Ethnicity			
Hispanic or Latino (any race) (%)	2	3	5
Non-Hispanic white alone (%)	2	3	2
Non-Hispanic black alone (%)	95	93	93
Foreign born population (%)	2	2	2
Socioeconomic Characteristics			
High school graduates (%) ³	61	70	76
Median household income (\$) ⁴	38,821	30,123	26,892
Unemployment rate (%) ⁵	20	26	19
Owner occupied housing units (%)	31	29	28
Age and Language			
Median age (years)	29	34	33
Population 5 years and over that speaks ⁶ :			
Only English at home (%)	95	96	95
Spanish at home (%)	3	3	4
Other Indo-European languages at home (%)	1	0	1
Asian and Pacific Island languages at home (%)	0	0	0
Other languages at home (%)	0	0	0

Demographic Characteristics of Zip Code 60652 (Chicago - Ashburn Park), 2000-2016

	2000 ¹	2007-2011 ²	2012-2016 ²
Total population	39,126	42,883	43,228
Race and Ethnicity			
Hispanic or Latino (any race) (%)	17	32	38
Non-Hispanic white alone (%)	38	16	12
Non-Hispanic black alone (%)	42	50	47
Foreign born population (%)	12	15	18
Socioeconomic Characteristics			
High school graduates (%) ³	81	82	84
Median household income (\$) ⁴	76,574	66,834	64,574
Unemployment rate (%) ⁵	9	10	13
Owner occupied housing units (%)	91	86	83
Age and Language			
Median age (years)	34	34	35
Population 5 years and over that speaks ⁶ :			
Only English at home (%)	78	69	65
Spanish at home (%)	14	28	31
Other Indo-European languages at home (%)	4	2	2
Asian and Pacific Island languages at home (%)	1	0	1
Other languages at home (%)	3	2	2

1. U.S. Census

2. American Community Survey

3. Among those age 25 years and over

4. 2016 inflation-adjusted dollars

5. Among civilian labor force age 16 years and over

6. Percentages may not add to 100 due to rounding

Demographic Characteristics of Zip Code 60804 (Cicero), 2000-2016

	2000 ¹	2007-2011 ²	2012-2016 ²
Total population	86,133	83,822	83,972
Race and Ethnicity			
Hispanic or Latino (any race) (%)	78	86	89
Non-Hispanic white alone (%)	20	10	7
Non-Hispanic black alone (%)	1	4	3
Foreign born population (%)	44	44	40
Socioeconomic Characteristics			
High school graduates (%) ³	48	62	60
Median household income (\$) ⁴	54,842	48,117	42,345
Unemployment rate (%) ⁵	10	13	10
Owner occupied housing units (%)	55	53	48
Age and Language			
Median age (years)	26	28	29
Population 5 years and over that speaks ⁶ :			
Only English at home (%)	26	18	17
Spanish at home (%)	70	81	82
Other Indo-European languages at home (%)	3	1	1
Asian and Pacific Island languages at home (%)	1	0	1
Other languages at home (%)	0	0	0

1. U.S. Census

2. American Community Survey

3. Among those age 25 years and over

4. 2016 inflation-adjusted dollars

5. Among civilian labor force age 16 years and over

6. Percentages may not add to 100 due to rounding



Sinai Urban Health Institute
1500 S. Fairfield Avenue
Chicago, IL 60608