

# 2019 GRANT CYCLE INFORMATION SESSION

Tuesday, May 21, 2019





# WELCOME



**Maria S. Pesqueira**  
President

# AGENDA

1

Who We Are

2

Reflection and Look Ahead

3

2019 Grant Cycle

4

Application Process

5

Q&A



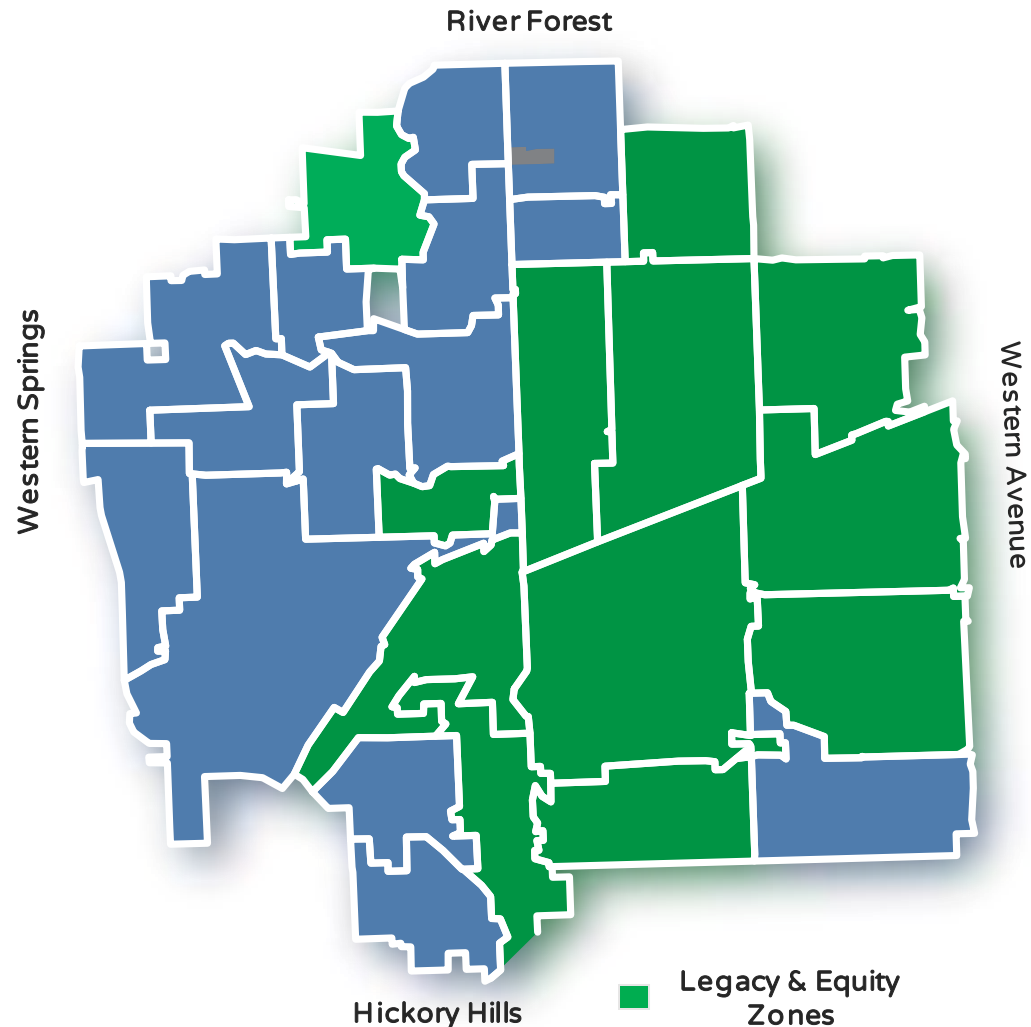
# WHO WE ARE – OUR MISSION

We are a **community-informed** grantmaking foundation that seeks to measurably improve the **health** and **well-being** of individuals, families and communities in our service region by promoting **health equity, quality** and **access**.

# HOW WE SEE SOCIAL DETERMINANTS OF HEALTH



# WHO WE ARE – OUR SERVICE REGION

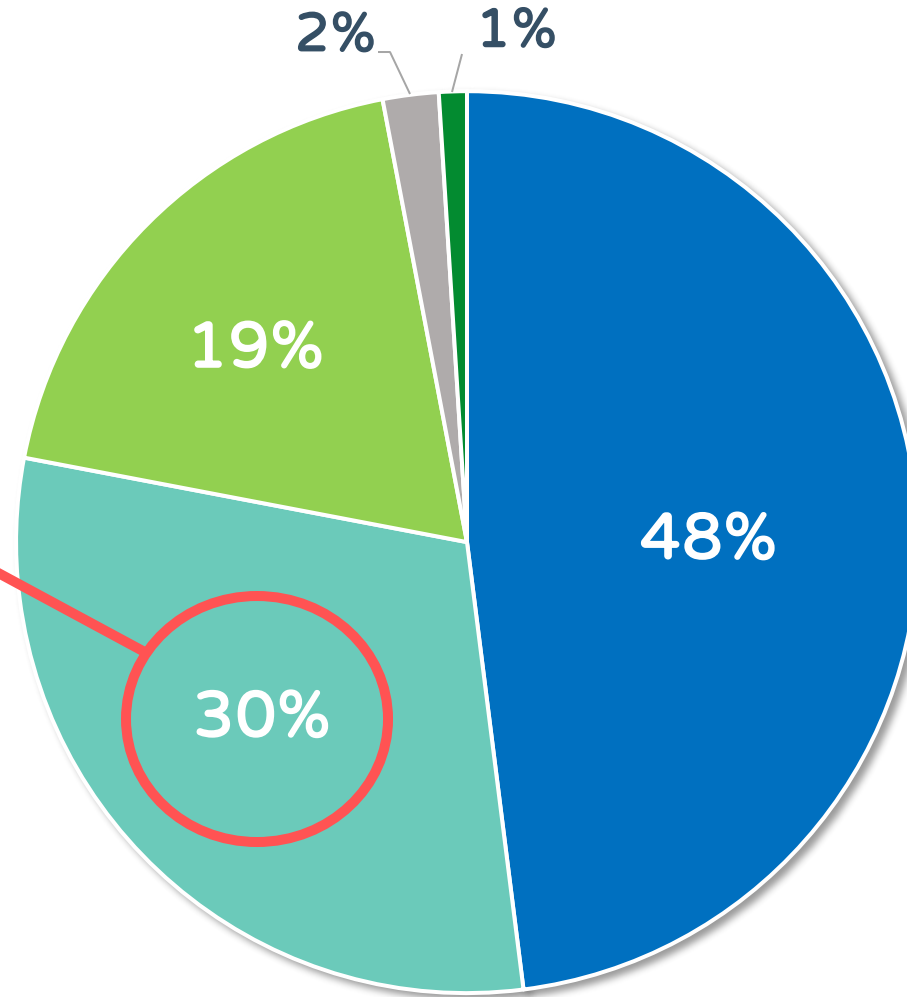


- 27 zip codes in Chicago and western Cook County suburbs
- 900K residents
- 71% of residents reside in Legacy & Equity Zone

# WHO WE ARE – OUR SERVICE REGION

The Census identifies the Middle Eastern population as White.

**FACT:** The southern portion of our region has largest Palestinian community outside of Palestine.



- Latinx
- White
- African-American
- Asian
- Other

# WHO WE ARE – OUR SERVICE REGION



1 in 6 lack health insurance, even with ACA

Access to healthcare institutions are concentrated in the western & northern parts of our service area



25% of residents get healthcare through Medicaid



Medicaid covers >60% of African-American & Latinx children

50% of Latinx noncitizens lack health insurance



# REFLECTION

Implementation of Strategic Plan

The HUB –  
[healthconnectionhub.org](http://healthconnectionhub.org)

Launch of CHW Pilot

>100 meetings in community

Census 2020

Involvement in numerous  
collaboratives



# LOOKING AHEAD

# 2019 GRANT CYCLE

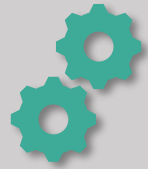


**Nora Garcia**  
Director of Programs



**Tina Ramirez Moon**  
Program Officer

# WAYS WE GIVE



GENERAL OPERATING SUPPORT



SPECIAL INITIATIVES



CAPACITY-BUILDING

# GRANTMAKING PRINCIPLES



Focus on racial, ethnic and socioeconomic equity



Community-embedded and engaged staff



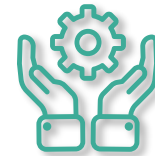
Community-defined solutions as a process and an outcome



Leverage power of collaborations/efforts at the intersection of issues/strategies



Long-term partnerships and commitment



General operating support to catalyze and sustain systems change



Fluidity in response to emerging strategies and crises



Grounded in community experience, evidence-based strategies and evaluation



# GRANTMAKING PRIORITIES





# GRANTMAKING PRIORITIES

## ACCESS to quality health services

### Strategies We Fund

- Improving quality and access to integrated primary health services in safety-net hospitals and community-based clinics in the HCF region.
- Improving access to mental health, behavioral and substance abuse services located within under-served communities and embedded within community-based organizations.
- Increasing access to health services for children/adolescents and individuals living with disabilities.

# GRANTMAKING PRIORITIES

## ADDRESS social determinants of health

### Strategies We Fund

- Community-based organizations with a dedicated health strategy that includes cross-sector collaborations and may include case management or community health workers.
- Efforts focused on removing individual barriers to accessing care, such as (but not limited to) transportation, interpretation and health literacy.
- Organizations using a health equity lens to focus on issues such as (but not limited to) housing, education, violence, environment, employment and food insecurity.

# GRANTMAKING PRIORITIES

## ADVOCATE for health-related policies & systems change

### Strategies We Fund

- Focus on policies that impact healthcare access for people who are underinsured and uninsured, including those who are undocumented.
- Community-led efforts to create more equitable health policies, systems and practices that directly impact services and delivery.
- Serving as a coordinating entity to local collaborative efforts focused on health.

# GRANTMAKING PRIORITIES

## AUGMENT knowledge through capacity-building

### Strategies We Fund

- Analyzing and/or conducting research on local health issues and trends that help inform the field and build practical knowledge for the social impact sector.
- Collecting, analyzing and disseminating disaggregated data to impact health equity in our region.
- Providing capacity-building to nonprofits in our region to improve health data collection and outcomes reporting.

# WHAT WE LOOK FOR

- ✓ Strong **engagement, commitment** and **knowledge** of the communities served
- ✓ Understanding of the **intersectionality of health** and other social issues and how work will improve **health outcomes**.
- ✓ Focus on **racial** and **health equity**.
- ✓ **Involvement** and **deep collaboration** beyond own programs with partners from the community(ies) served, health fields and from other sectors.



# APPLICATION PROCESS



# NEW APPLICATION PROCESS

STAGE 1: DUE **JULY 1ST**

LETTER OF INTENT

STAGE 2: DUE **AUGUST 15TH**

INVITATION-ONLY  
FULL APPLICATION

- Only one LOI per organization/institution
- Organizations serving as fiscal agents may submit two LOIs
  - One on behalf of the organization and of the sponsored organization
- Submit LOI and full application (if applicable) via WizeHive

# GRANT TYPES

Applicants can apply for:

One-year General Operating Support

or

Project Support Grants

# IMPORTANT DATES



LOIs Due



Invites Sent  
for Full Apps



Full Apps  
Due



Site Visits



Grant Decisions &  
Announcements



**THANK YOU!**



# Q&A